

FAMILIES W/CHILDREN

Family Housing Connection (FHC)..... 2-1-1 or 800.621.4636

As of April 23, 2012, King County 2-1-1 began screening for Family Housing Connection. Family Housing Connection provides a single access point for families with children and pregnant women seeking shelter and transitional housing in King County.

Steps to get shelter or transitional housing through Family Housing Connection:

1. Call 2-1-1.
2. 2-1-1 will schedule an appointment for you to meet with an FHC specialist.
3. Meet with an FHC specialist at a site near you. FHC specialists are able to meet with clients at 8 different locations throughout King County.
4. Receive a follow-up phone call when a housing resource becomes available.
5. Meet with the housing staff at that location to ensure that it's the best fit for you and your family.

WINTER SHELTERS

Winter Response Shelters are seasonal and are generally open October through March or April. All shelters run daily.

King County Winter Response Shelter—Men 206.263.9089
500 4th Ave, King County Administrative Building, Seattle
WALK IN at 9pm. Provides 50 seasonal beds for men.

CCS—Women's Winter Shelter—South King253.854.0077
CALL for availability and application locations
Coordinates one winter shelter program for 15 women at a church in Federal Way.

Seattle Human Services—City Hall.....206.684.0231
223 Yesler Way, Seattle
WALK IN at 9pm. Winter shelter for 75 men and women.

Seattle Human Services—Frye Hotel 206.684.0231
600 4th Ave, Seattle
WALK IN at 8pm. Winter shelter for 25 women.

YWCA Angeline's Women's Winter Shelter206.770.0156
2030 3rd Ave, Seattle
WALK IN 6-9pm. Provides 40 seasonal beds for women.

Eastside Winter Shelter 425.417.4815
Men—17222 NE 8th St, Bellevue
WALK IN at 8:30pm. Provides seasonal shelter for up to 50 men.
Women and Families—911 164th Ave NE, Bellevue
WALK IN at 8:30pm. Provides seasonal shelter for up to 15 single women and families with children.

COUPLES W/O CHILDREN

Tent City (SHARE/WHEEL)
Seattle..... 206.399.0412
Eastside 206.618.3901
CALL for availability. Hours vary. Self-managed outdoor encampments for men, women & couples. Locations rotate every 90 days. No fees, but req'd to participate in shelter operations.

DOMESTIC VIOLENCE

Salvation Army - Catherine Booth House206.324.4943
CALL for intake. 24 hours, daily. Accepts collect calls. Serves women, with and without children.

DAWN—Domestic Abuse Women's Network206.622.1881
V/TTY. CALL for intake. 24 hours, daily. Provides shelter in a confidential location. Serves women, with or without children.

Eastside Domestic Violence.....800.827.8840
CALL for intake. 24 hours, daily. Provides shelter in a confidential location. Serves women with or without children. Motel vouchers sometimes provided.

Korean Women's Association.....888.508.2780
CALL 24 hours, daily. Serves women and children. Cannot serve boys over 12.

New Beginnings.....206.522.9472
CALL 24 hours, daily. Provides shelter in a confidential location. Serves women with or without children. Accepts collect calls.

DAY SHELTER

Share/Wheel—Bunkhouse Day Shelter 206.448.7889
Josephinum, 1902 2nd Ave, Seattle
WALK-IN to apply. M, 1pm, W F, 9pm. Operates daytime shelter for men and women who work late night jobs. Located in Rainier Valley. No fees, participation in chores required.

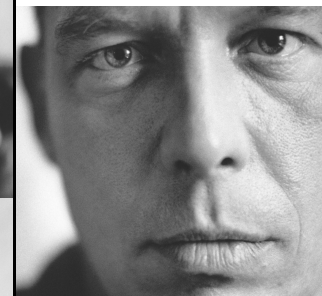
OTHER SERVICES

King County 2-1-1..... 2-1-1 or 800.621.4636
TTY 206.461.3610
Community Resources Onlinewww.crisisclinic.org
King County Crisis Line 206.461.3222
Pierce County 2-1-1 800.572.4357
Snohomish County 2-1-1 800.223.8145

Emergency

Shelters

In King County



May 2012



Brochures updated quarterly at
www.crisisclinic.org/Brochures.html

SINGLE MEN, 18+

Bread of Life Mission..... 206.682.3579
97 S Main St, Seattle
WALK IN to pre-register. Tu-Sa, 10am-4pm. Chapel attendance required. \$5/night, 2 free nights per year.

Catholic Community Services—HOME & ARISE.....253.854.0077 x2
1229 W Smith St, Kent / 314 S 4th St, Renton
CALL FIRST for availability. Coordinates 2 shelters in Kent & Renton, hosted by rotating congregations. No fees.

Compass Housing Alliance - Men's Shelter..... 206.357.3230
210 Alaskan Way S, Seattle
WALK IN for intake. M W F, 9am-4:30pm. Tu Th, 9am-3pm. Sa, 9:30am-1pm. \$21/week.

DESC - Downtown Emergency Service Center..206.464.1570 x3033
517 3rd Ave, Seattle
WALK IN for intake. M-F, 7:30am-5pm. SERVES MEN 60+; adults vulnerable due to mental illness, developmental disabilities, chemical dependency and/or medical conditions. No fees.

Eastside Interfaith..... 425.749.8369
CALL anytime to leave message or to hear when phones will next be answered. Provides shelter at rotating congregations. No fees. Priority given to those who live or work on the Eastside. ID req'd.

Salvation Army - William Booth Center 206.621.0145
811 Maynard Ave S, Seattle
WALK IN for intake. Daily, 9am-4pm. First 30 nights free; \$5 per night, cash only. Advance calls about space recommended.

Seattle Indian Center - See'sha Inn 206.329.8700
611 12th Ave S, Seattle
WALK IN for intake. Daily, 7-10:30pm. \$15/night, cash only. Sober clients only, provides breakfast and shower in the morning.

SHARE/WHEEL..... 206.448.7889
Josephinum, 1902 2nd Ave, Seattle
WALK IN and take flyer for latest screening times/locations. Operates self-managed shelters in Seattle area. No fees, must participate in organization chores. Screenings occur most weekdays, call for more info.

St Martin de Porres 206.323.6341
Lazarus Center, 416 2nd Ave Ext S, Seattle
WALK IN for screening. Daily, 6:30pm. Serves men, AGES 50 AND OLDER, who are able to sleep on a mat. Men are bused from Lazarus Center to shelter. No fees.

Union Gospel Mission 206.622.5177
318 2nd Ave Ext S, Seattle
Screening daily in person at 6:30pm. No fees, chapel attendance req'd.

Tent Cities (SHARE/WHEEL)
Seattle..... 206.399.0412
Eastside..... 206.618.3901
Call to ask about availability. Hours vary. Operates 2 self managed outdoor encampments for men, women & couples. Rotates location every 90 days. No fees.

SINGLE WOMEN, 18+

DESC - Downtown Emergency Service Center
517 3rd Ave, Seattle.....206.464.1570 x3033
WALK IN for intake. M-F, 7:30am-5pm. Serves women, ages 18 and older. No fees.

Hospitality House..... 206.242.1860
15003 14th Ave SW, Burien
CALL for screening. Daily, 8am-8pm. Provides shelter for single women. Cannot serve clients fleeing domestic violence, or who have severe mental illness or current substance abuse problems. No fees.

Sacred Heart Shelter..... 206.285.7489
232 Warren Ave N, Seattle
CALL for screening. 24 hours, daily. Provides shelter for single women.

Salvation Army Women's Shelter..... 206.447.9944
1101 Pike St, Seattle
CALL to schedule intake. M-F, 9am-noon, 1-4pm. Provides shelter for single women. First 2 weeks free. Income-based thereafter.

SHARE/WHEEL - Self-Managed Shelters 206.448.7889
Josephinum, 1902 2nd Ave, Seattle
WALK IN and take flyer for latest screening times/locations. Operates self-managed shelters in Seattle area. No fees, must participate in organization chores. Screenings occur most weekdays, call for more info.

SHARE/WHEEL—Tent Cities
Seattle..... 206.399.0412
Eastside..... 206.618.3901
CALL for availability. Hours vary. Operates two self-managed outdoor encampments for men, women and couples at locations that rotate every 30-90 days. No fees, but required to participate in shelter operations.

Sophia Way..... 425.463.6285
752 108th Ave NE, Bellevue
CALL for intake, M, 9am-5pm. Serves single women. Cannot accept anyone with a recent violent felony or recent DV victims.

Union Gospel Mission - Hope Place..... 206.628.2008
3802 S Othello St, Seattle
CALL for screening, M-F, 8:30-9am. Provides shelter for women. Includes mandatory spiritual activities. No fees.

YWCA - Seneca206.461.4882
1118 5th Ave, Seattle
CALL & LEAVE A MESSAGE EVERY DAY. Calls are returned only when there is availability. Can serve women fleeing domestic violence. No fees.

YWCA—Angeline's206.436.8650
2030 3rd Ave, Seattle
CALL to inquire about upcoming orientation time/date.

Women's Referral Center206.441.3210
2030 3rd Ave, Seattle
WALK IN for screening, nightly from 6-9pm. Priority given to those who arrive by 8pm. Provides emergency shelter referral for women. Places clients in many agency and congregation based shelters throughout Seattle. No fees.

YOUTH & YOUNG ADULTS

Auburn Youth Resources—SKC Youth Shelter800.609.6884
CALL for screening 24 hours, daily. Provides emergency shelter for youth, ages 10 through 17. Parent/guardian consent req'd for stays longer than 8 hours. Sliding scale fees, may be free.

Friends of Youth—Youth Haven Teen Shelters206.236.5437
CALL for screening 24 hrs, daily. Operates 2 confidential shelters for children, ages 11-17. Sliding scale; no one turned away due to inability to pay.

Friends of Youth - The Landing425.449.3868
YMCA, 14230 Bel-Red Road, Bellevue
WALK IN for intake. Su-Th, 8:30pm. Provides shelter for young adults, ages 18-24. No children or pets. ID req'd. No fees.
Lake Washington United Methodist
7525 132nd Ave, Kirkland
WALK IN for intake. F Sa, 8:30pm. Provides shelter for young adults the two days the above location is closed.

ROOTS Young Adult Homeless Shelter 206.632.1635
University Temple United Methodist Church
1415 NE 43rd St, Seattle
WALK IN for intake. Daily, 8:20-8:30pm. Shelter entrance is in the alley between the church & post office. Serves young adults, ages 18-25. Cannot serve anyone younger than 18. ID req'd.

Orion Center..... 206.622.5555
1828 Yale Ave, Seattle
WALK IN, F-Tu, 4-6pm. Serves young adults without children, ages 18-24.

YouthCare Shelter.....800.495.7802
2500 NE 54th St, Suite 201, Seattle
CALL for screening 24 hours, daily. Provides emergency shelter for youth, ages 12-17. No fees.