

FOUNDATION OF AN IMPROVED WATERFRONT

The Seawall Project is one of several exciting improvements included in the City's Waterfront Seattle Program, an effort to create an inviting new public waterfront. Beyond this program, several other significant state and City partner projects are in progress and planned for Seattle's waterfront:

- SR 99 Tunnel Project
- Colman Dock
- Seattle Aquarium
- Pike Place Market



RESTORING A LOST HABITAT: ELLIOTT BAY'S NEARSHORE ENVIRONMENT



Test panels of glass, such as these shown from beneath Pier 62/63, were studied for their effectiveness in transmitting light.

When Seattle's waterfront was developed, Elliott Bay lost many of the habitat features associated with its native intertidal habitat, including sloping beaches, crevices, and vegetated hiding places for fish.

Restoring the salmon migration corridor and improving ecosystem productivity are important objectives of the Seawall Project.

The City of Seattle is aiming to create an enhanced fish migratory corridor in four primary ways:

- 1. Provide more light** Light penetrating surfaces in the cantilevered sidewalk will allow light to pass through to the water below.
- 2. Create shallower habitat** Habitat benches will provide a shallow water habitat with gravel surfaces to act as hiding and foraging places for aquatic life.
- 3. Incorporate more texture** The face of the new seawall has cobbled surfaces and shelves to promote growth of vegetation and marine invertebrates.
- 4. Provide riparian vegetation** Native riparian vegetation will be planted along the seawall and at a new intertidal beach.



YOU'VE GOT QUESTIONS? WE HAVE ANSWERS.

waterfrontseattle.org/seawall

24_{hr} 206.618.8584

? seawall@waterfrontseattle.org

@WaterfrontSEA

f **Waterfront Seattle**

Americans with Disabilities Act (ADA) Information: Materials can be provided in alternative formats—large print, Braille, cassette tape, or on computer disk—for people with disabilities by contacting 206.618.8584, seawall@waterfrontseattle.org. Persons who are deaf or hard of hearing may make a request for alternative formats through the Washington Relay Service at 7.1.1.



What is the Elliott Bay Seawall Project?

The City of Seattle is replacing the aging, failing seawall along the waterfront and improving the lost nearshore environment.

Benefits? Definitely.

The new seawall will:

- Protect public safety
- Meet current seismic standards
- Improve the salmon migration corridor
- Last more than 75 years
- Act as the foundation of Seattle's future waterfront

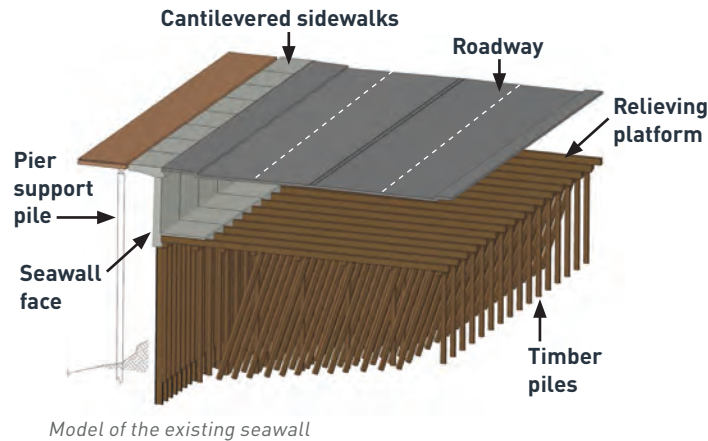
THE ORIGINAL SEAWALL

The existing seawall has protected Seattle’s waterfront for more than 70 years, but time and a harsh marine environment have weakened the structure. Cracks within the face of the wall allow salt water and marine borers, called gribbles, to infiltrate and eat away the timber support. As the tide recedes through cracks in the wall, it carries with it fill soil that results in dangerous voids underneath Alaskan Way.



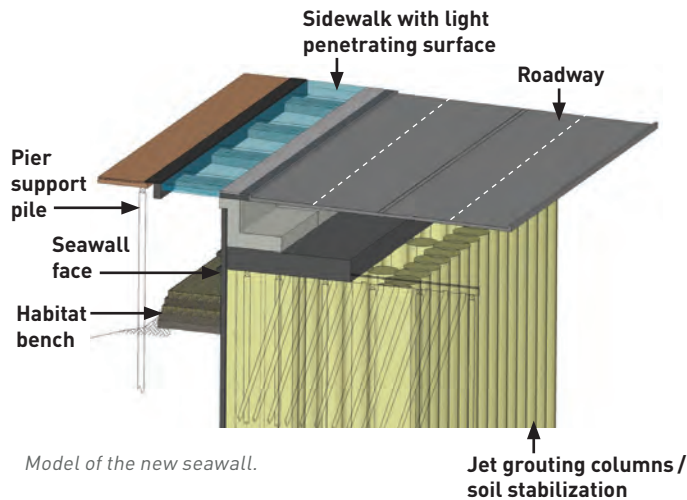
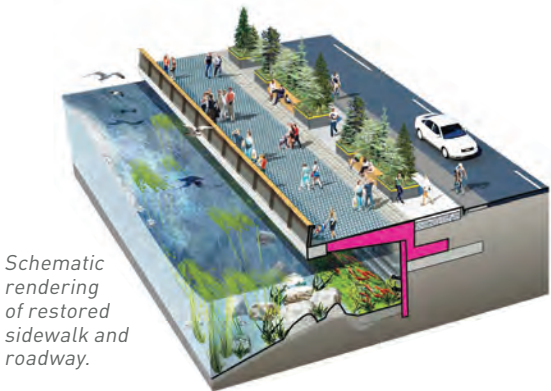
Seawall failure (courtesy Seattle PI archives, 1986)

The original seawall is more than just the concrete face at the edge of the water. An estimated 20,000 old growth trees were driven into the soil to build the structure. In some locations, like near the historic piers, the wall is approximately 60 feet wide.



THE NEW AND IMPROVED SEAWALL

The new seawall will be built to current seismic standards and is designed to last more than 75 years. Improvements include stabilizing the existing soil behind the seawall face, as well as moving the seawall 10-15 feet eastward to accommodate construction and create additional space for habitat.



The Seawall Project is designed to maintain flexibility for future opportunities. All surface features west of the restored sidewalk will be built in their final state at the completion of the seawall project. Elements east of the sidewalk, such as the roadway, will be restored in an interim condition and then redesigned and rebuilt as part of the Waterfront Seattle Program.

GETTING TO THE WATERFRONT IS EASY - IT'S THE SAME!

We know that construction can be noisy, dirty, disruptive and ugly – but it can also present a unique opportunity to explore.



Throughout construction, you will see a new system of wayfinding and information along the waterfront and throughout the city, all designed to help you navigate to and from the waterfront, and to help you have a little fun once you get there.

Access routes will vary, but watch for:

- Clear and robust wayfinding
- A temporary roadway under the viaduct for traffic
- Clear pedestrian and bicycle routes
- East/west access across Alaskan Way in key locations
- Temporary fencing around construction areas to ensure public safety
- Signage for parking in and around the waterfront



A PLACE TO PARK

Wondering where you can find parking during construction? Visit downtownseattleparking.com for the latest information and promotions.

WHAT TO EXPECT WHEN YOU GET HERE

- Your favorite waterfront attractions, businesses and events are open and accessible
- Public parking will be maximized to the extent possible
- Flaggers and innovative wayfinding will be located throughout the waterfront to help guide you to and around the waterfront, as well as through construction areas

PLANNING CONSTRUCTION

Seawall construction was planned with a number of goals in mind:

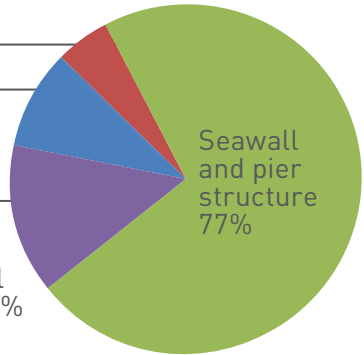
- Accommodate waterfront businesses in the busy summer months
- Maximize parking and access on the waterfront
- Consolidate construction areas into specific locations to minimize impacts in front of waterfront businesses and residences
- Accommodate Washington State Ferries queuing at Colman Dock
- Coordinate timing with other waterfront projects, such as the SR 99 Tunnel Project

CONSTRUCTION COST BREAKDOWN

Habitat and ecosystem restoration 4%

Transportation and access 7%

Sitework and environmental protections 12%



Central Seawall from S. Washington to Virginia streets has been funded and includes:

- \$290 million, City of Seattle public bond measure (November 2012)
- \$28 million, City of Seattle general funding
- \$32 million grant, King County Flood Control District

MEET YOUR STREET TEAM



The Street Team is your on-the-ground outreach resource dedicated to providing you the information you need about construction. The Street Team will:

- Communicate real-time construction updates and progress
- Provide project information and maps
- Respond to questions and concerns
- Be on-site daily, living the construction with you

During construction, look for the Street Team along the waterfront and at many neighborhood events. Contact the team via:

waterfrontseattle.org/seawall

24 hr

206.618.8584

?

seawall@waterfrontseattle.org



Getting to the waterfront is easy – it's the same!



Seawall construction is underway, but it's easy to get to the waterfront. Tips for your travel.

From Ballard/Queen Anne

- Take Elliott Ave W towards the waterfront
- Then turn west on Broad St
- Slight left onto Alaskan Way

From Seattle Center

- Depending where you are in the Seattle Center, you can either:
 - Take Broad St to Alaskan Way
 - Take 2nd Ave N south to Wall St, then turn west on Wall St and continue for two blocks to Alaskan Way

From Mercer/South Lake Union

- Take Broad St west to Alaskan Way

From I-5 to the waterfront

North

- From the north, take the Mercer St exit on the right (exit no. 167)
- Continue west on Mercer St
- Veer right on to Broad St and continue west to Alaskan Way

South

- From the south, take Dearborn/Madison St exit on the right (exit no. 164A)
- Keep right at the fork, follow signs towards Madison St then turn west
- Stay on Madison St until Alaskan Way

From I-90/Stadiums to waterfront

- Head west on I-90
- Keep left at the fork and follow signs for Edgar Martinez Dr
- Turn right onto Edgar Martinez Dr and continue for one block
- Turn right onto 1st Ave S
- Turn left at the fork on to Railroad Way S and continue on to Alaskan Way S

From SR-99 North/West Seattle

- Exit onto WA-99N/Alaskan Way Viaduct, continue north
- Take the Western Ave exit on the right
- Continue north on Western Ave for two blocks
- Turn left onto Wall St until you reach Alaskan Way

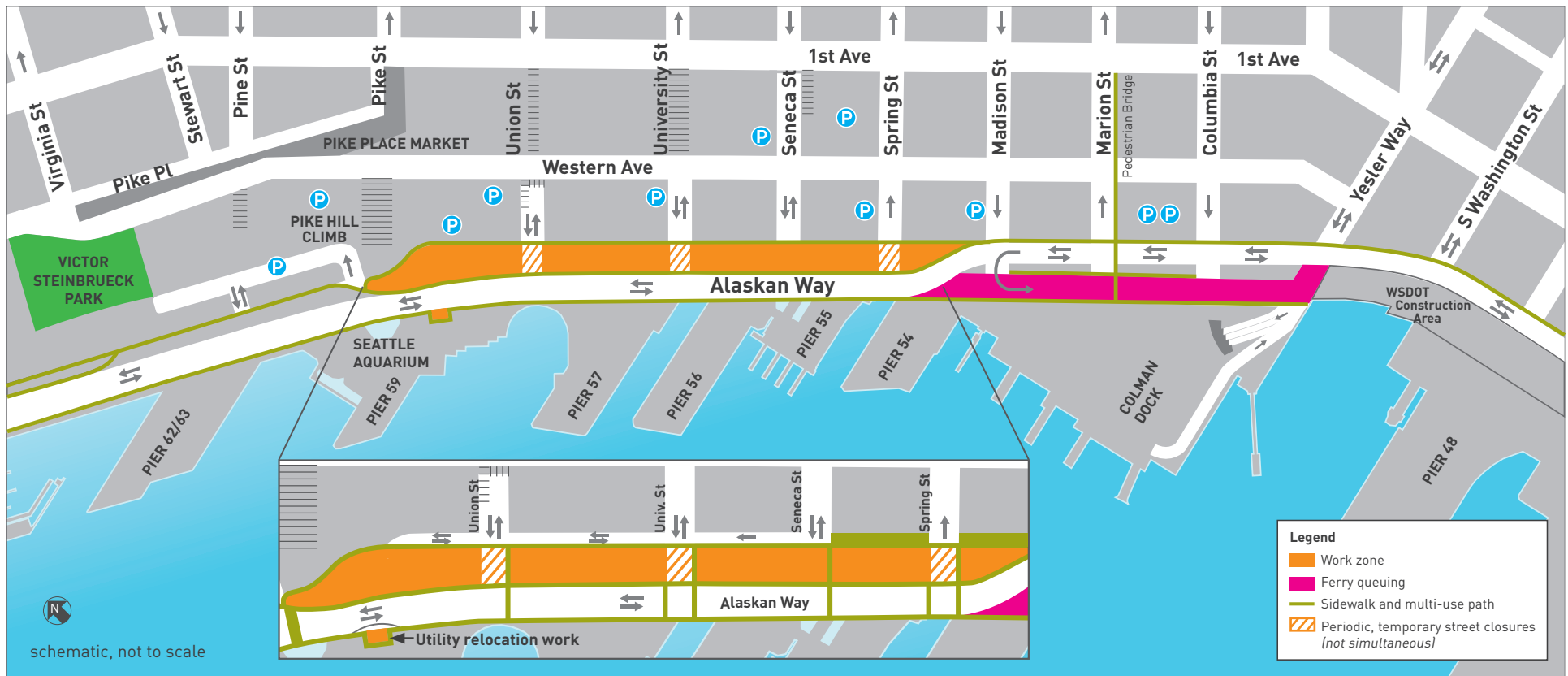
From waterfront to Stadiums

- Head south on Alaskan Way
- Turn left onto Marion St for two blocks, then turn right on 1st Ave
- Continue on 1st Ave for about 1 mile; the stadiums will be on your left





Temporary roadway construction (November - December 2013)



Activities will include:

- Mobilizing equipment and materials
- Removing angled parking adjacent to Alaskan Way between Virginia and Pike streets and beneath the viaduct between Pike and Madison streets
- Constructing the temporary roadway underneath the Alaskan Way Viaduct
- Continuing utility and telecommunications relocation work

YOU WONDER? WE ANSWER. THE STREET TEAM KNOWS CONSTRUCTION.

waterfront
SEAWALL

Responding to emails
seawall@waterfrontseattle.org

Answering phone calls
[206.618.8584](tel:206.618.8584)

Posting updates online
waterfrontseattle.org/seawall

Tweeting updates
 [@WaterfrontSEA](https://twitter.com/WaterfrontSEA)

Posting photos & updates
 [Waterfront Seattle](https://www.facebook.com/WaterfrontSeattle)

