



Pioneer Square Parks and Gateways

Executive Steering Committee #2
10/08/15

WALKER | MACY

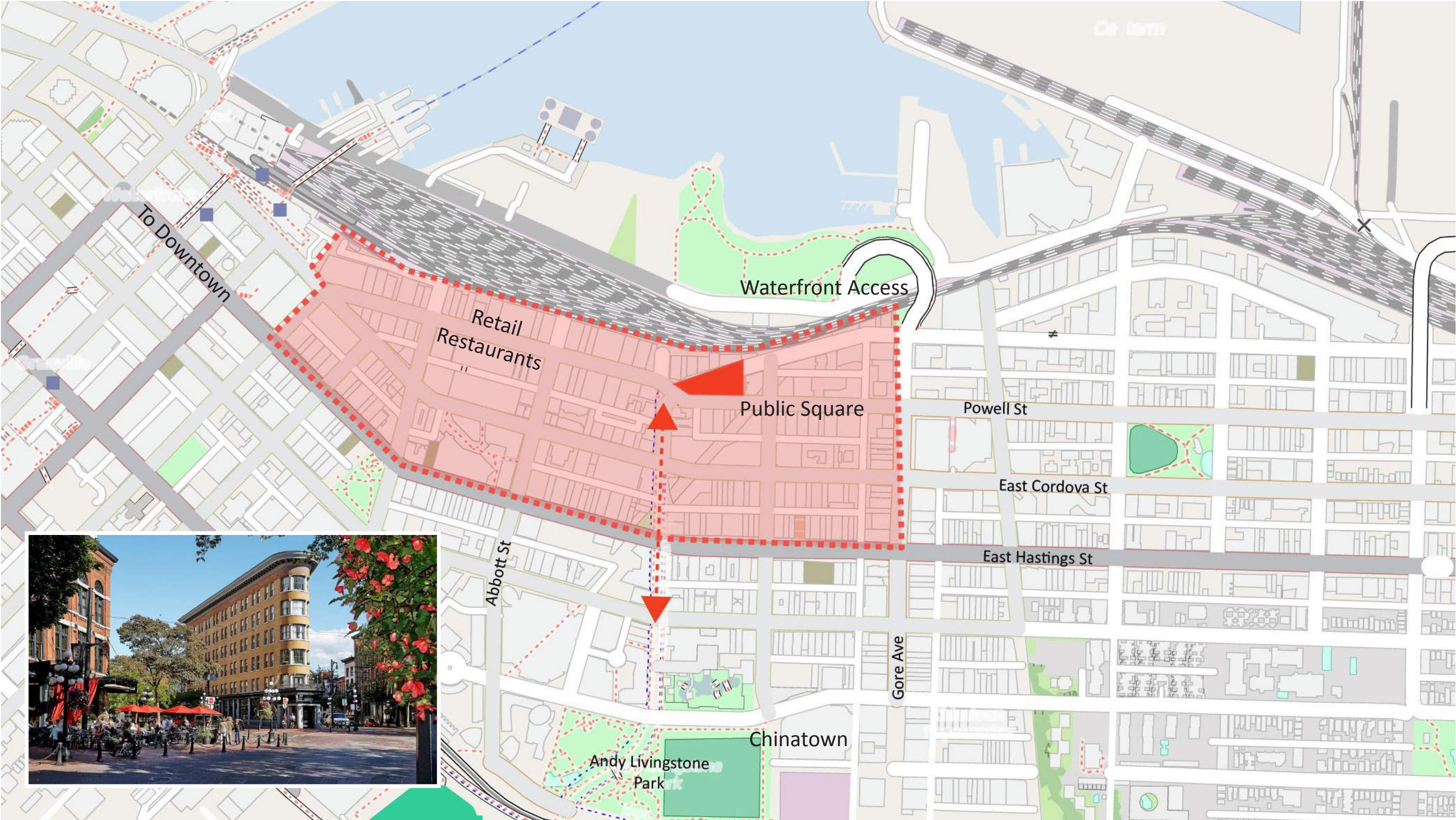
The Big Picture



Gaslamp District, San Diego



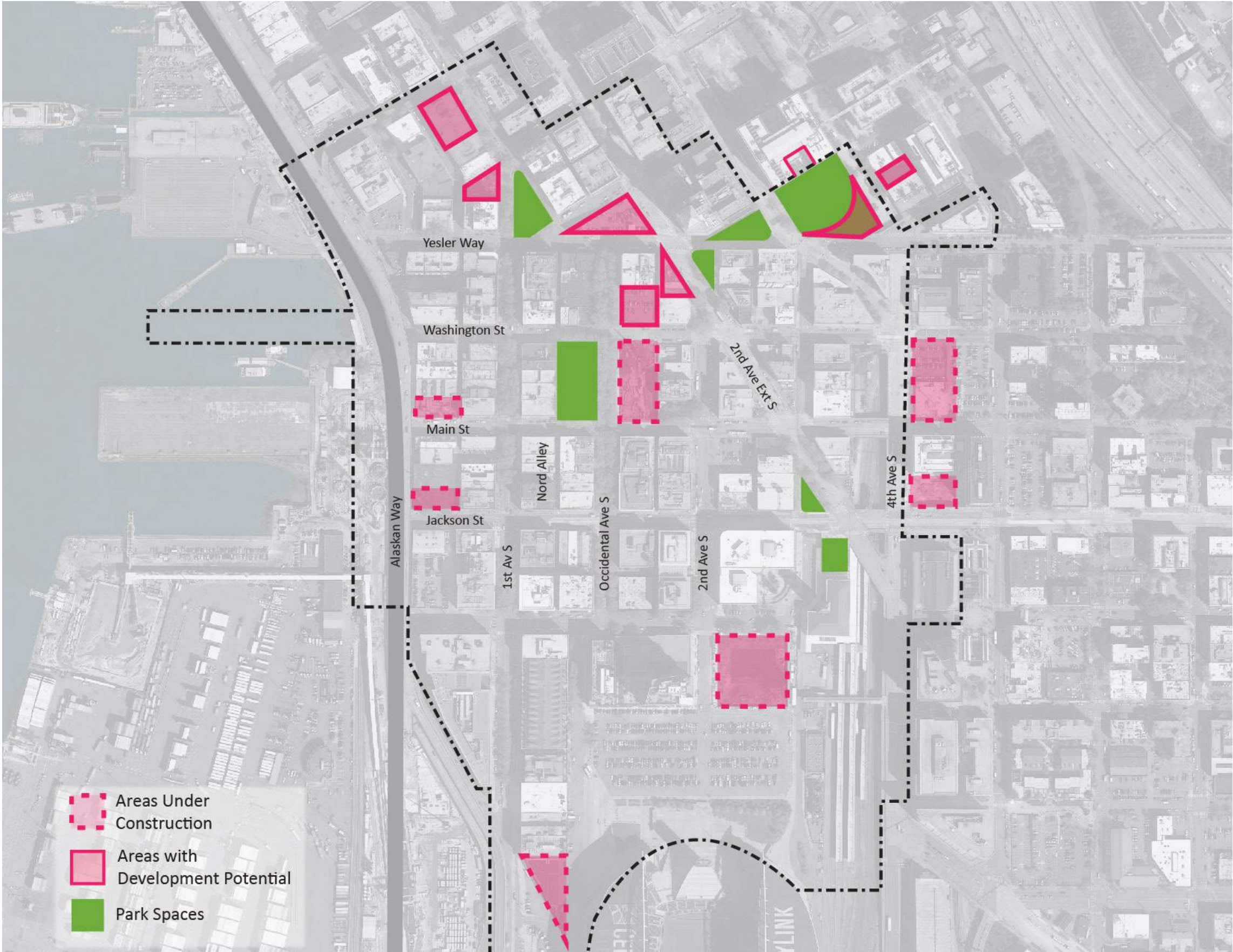
Gaslight District, Vancouver B.C.



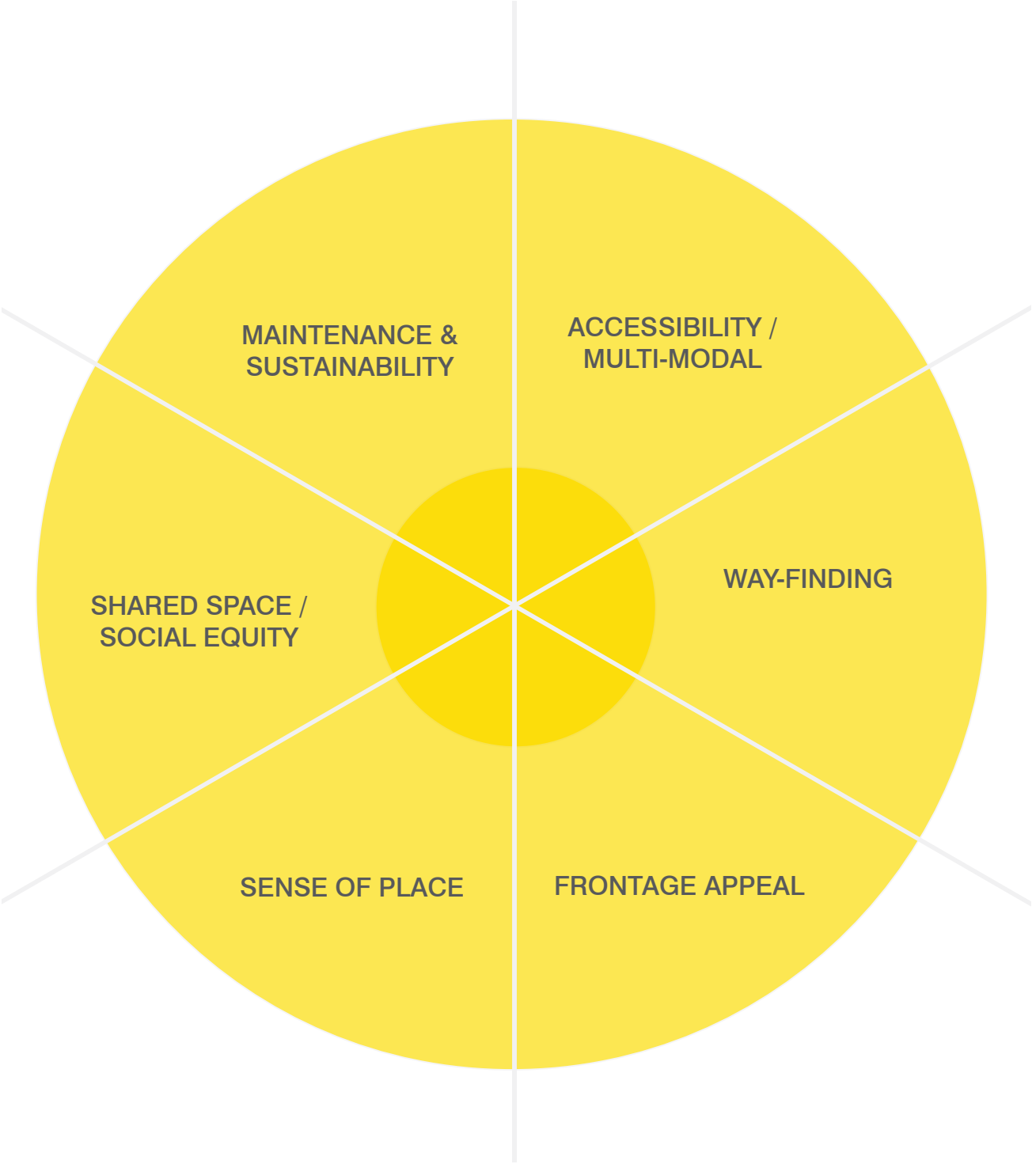
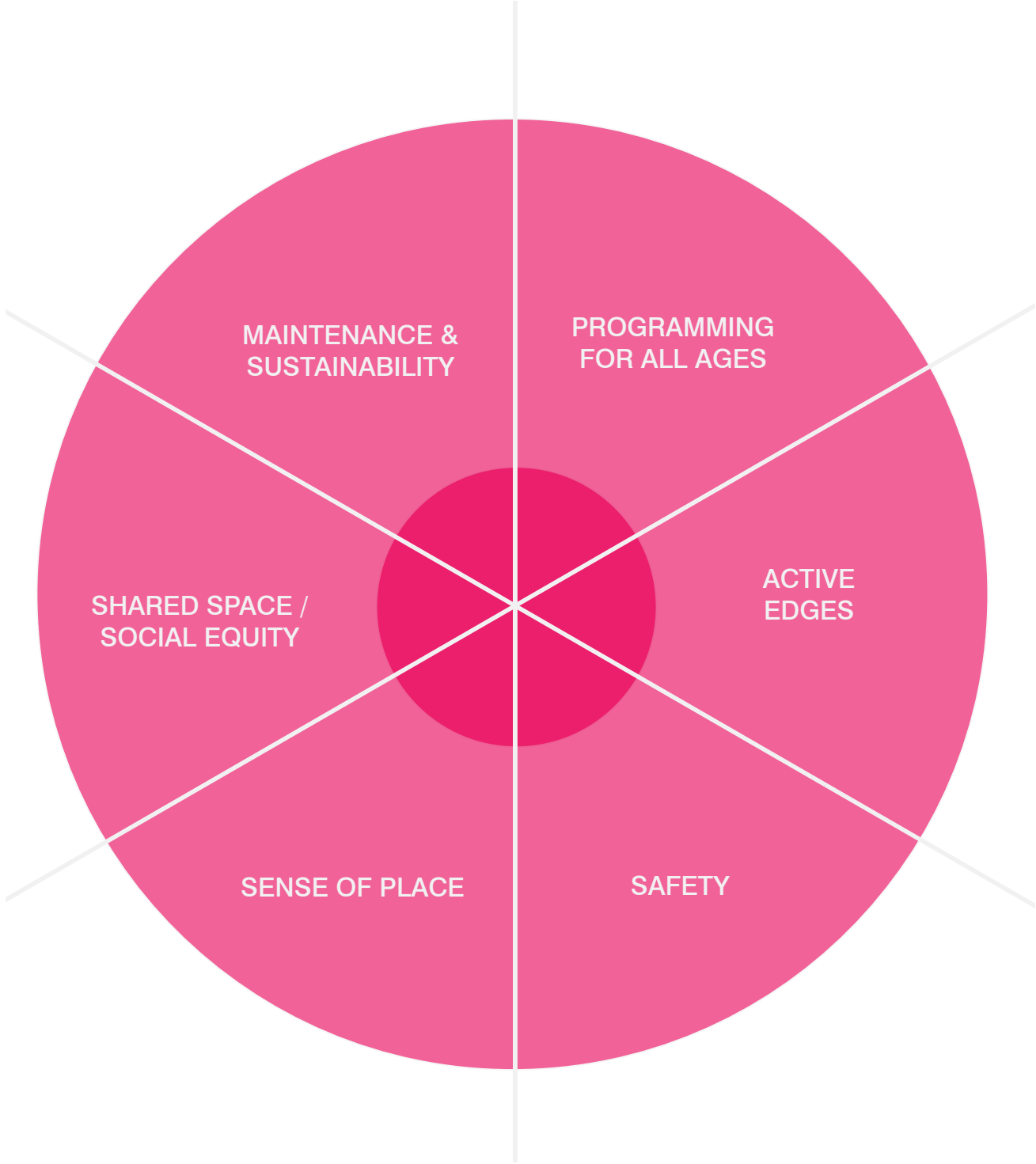
LoDo, Denver



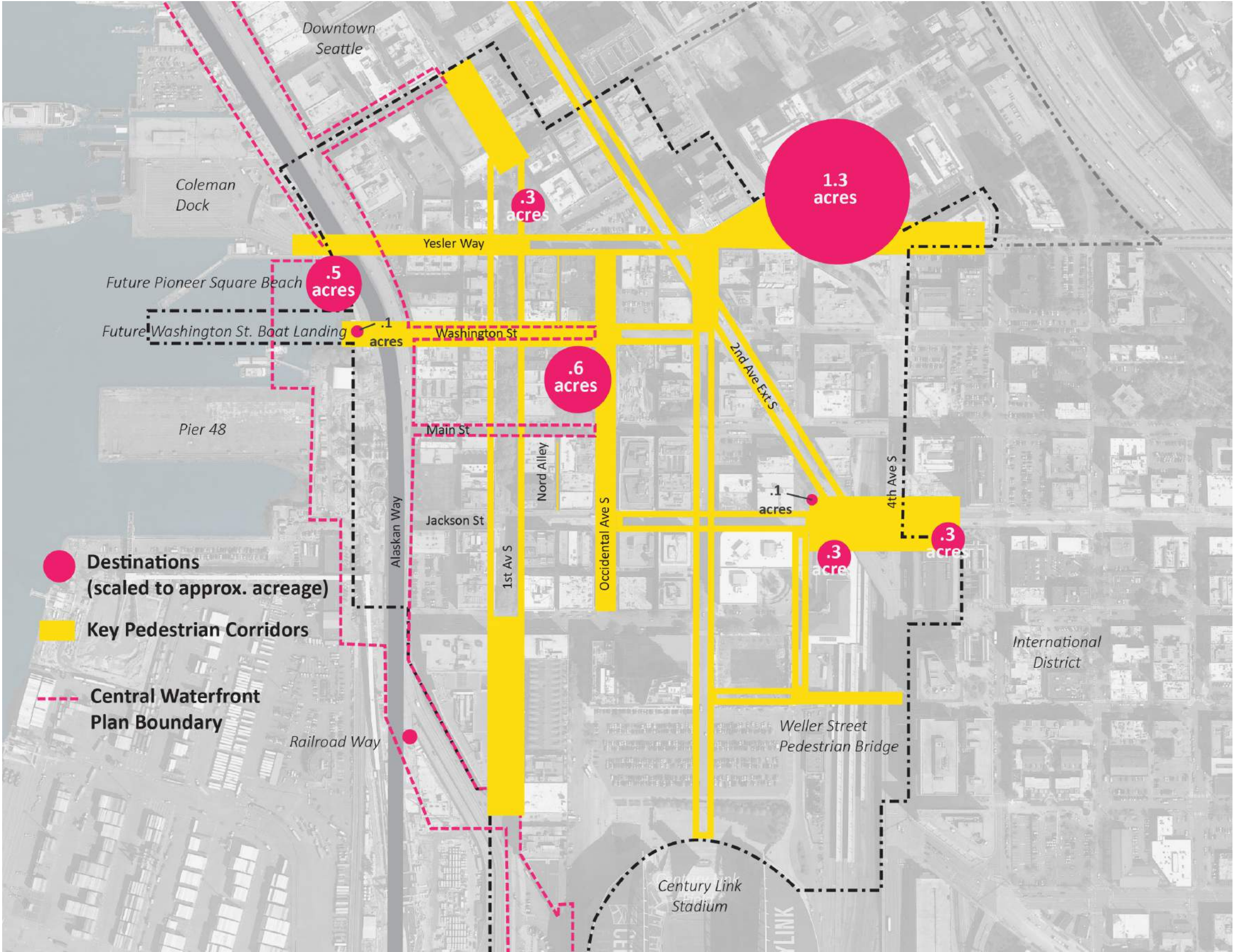
Development Opportunities



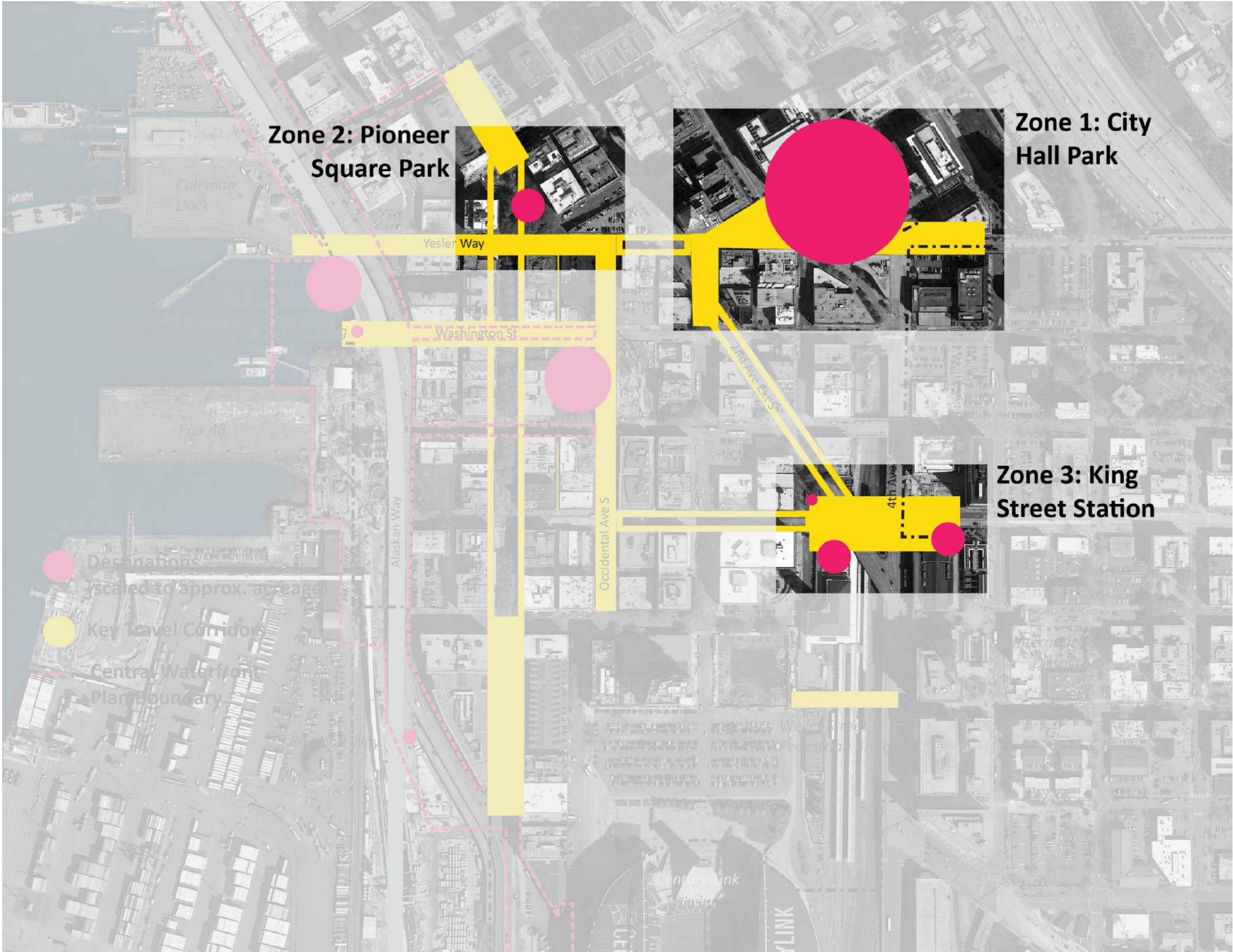
Destinations and Circulation



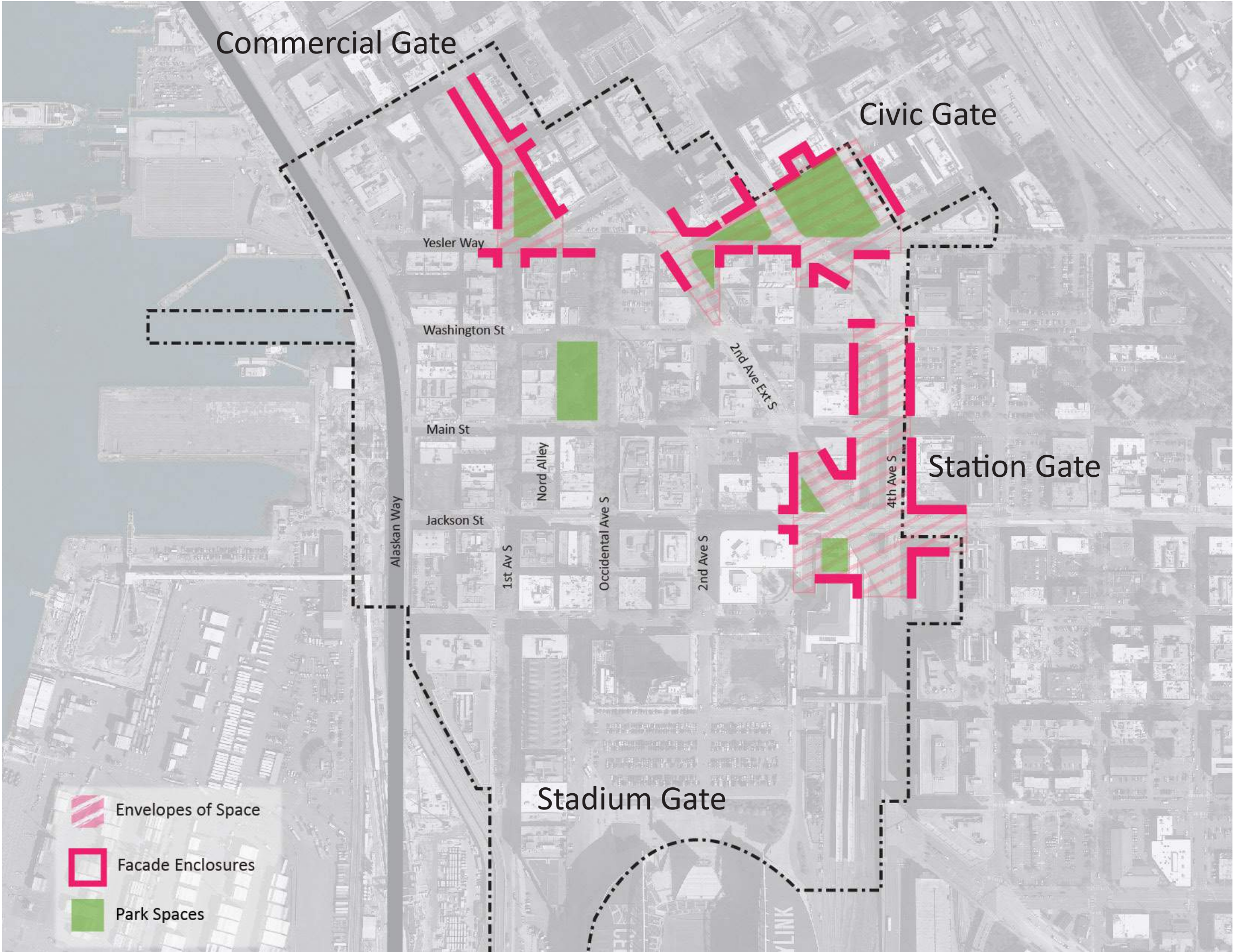
Destinations and Circulation



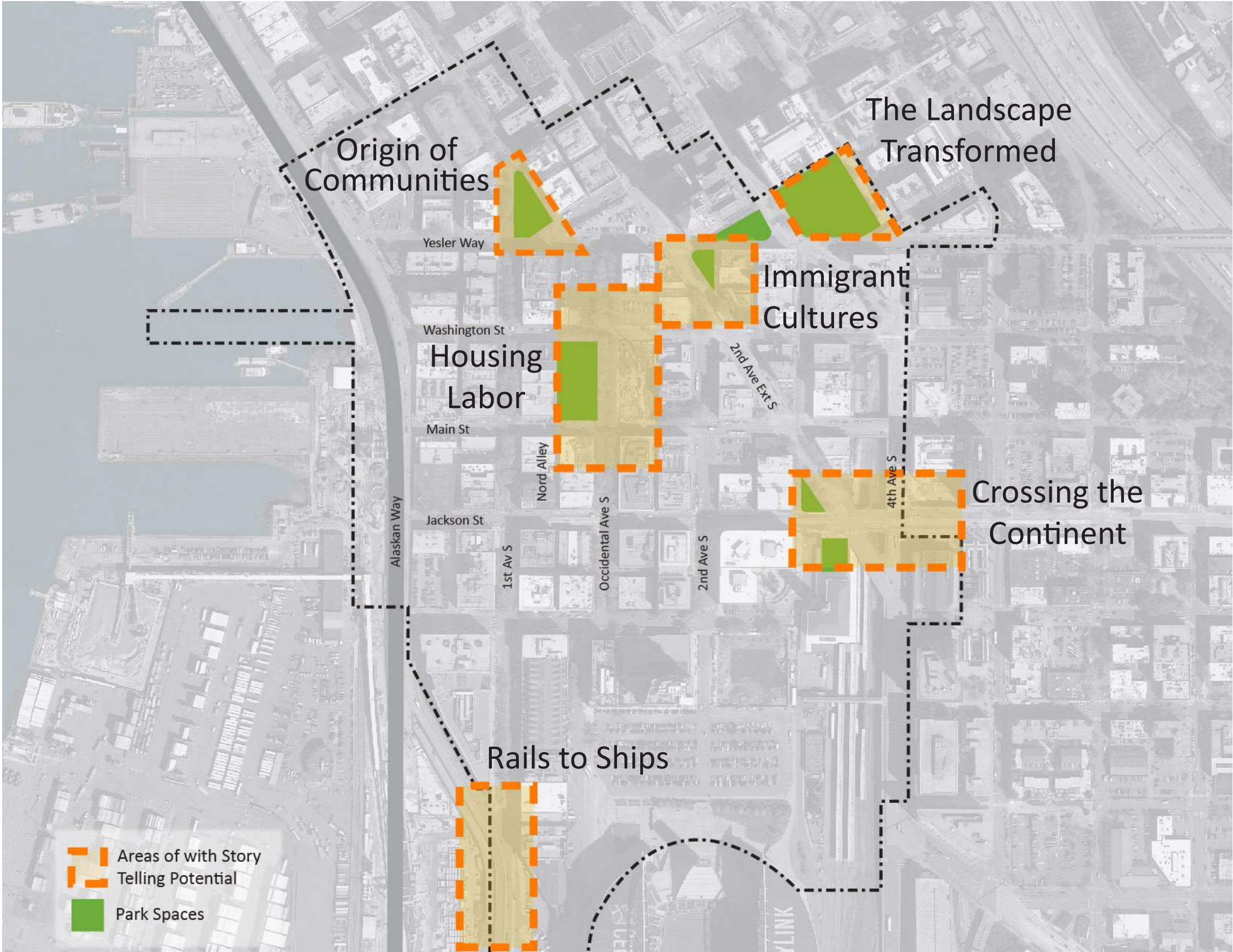
Key Undeveloped Areas



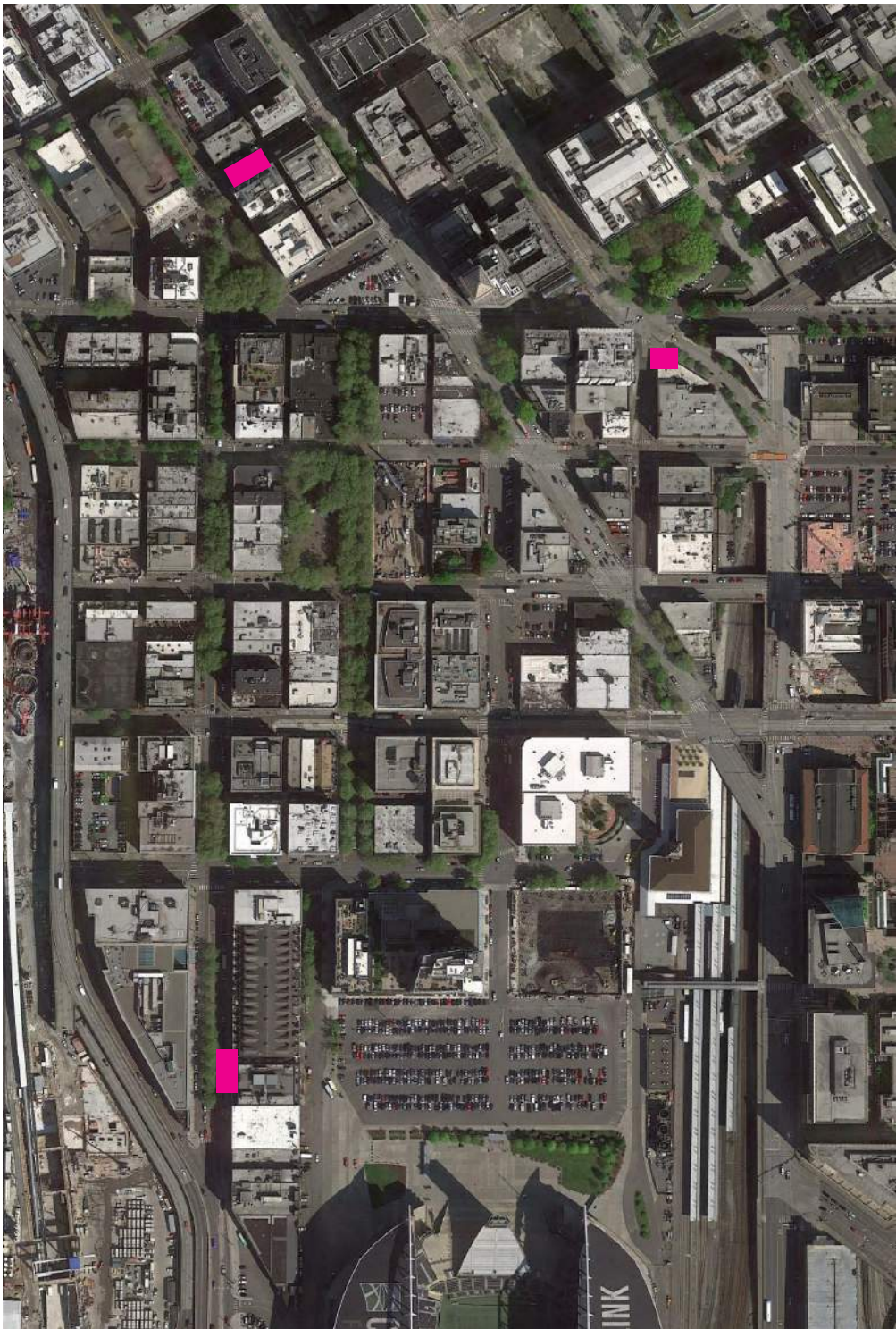
Envelopes of Space



Historical Narratives



New Narratives - PARK(ing) Day



Parking Day - Authentic Public Engagement



Parking Day - What We Heard

240 "Votes"

48 residents

124 visitors

68 work/create



1st & 2nd Place Finishers:

"Has Great Potential"

Pioneer Square Park (17) Occidental (15)

"That's a Park?"

Union Station Square (9) King St Station (6)

"Needs Love"

City Hall Park (18) Pioneer Square Park (13)

"Love It!"

Occidental (19) Pioneer Square Park (12)

"Meet Me There"

Occidental (11) King St Station (8)

"Where's That?"

Union Station Square (14) Pioneer Square Park (9)

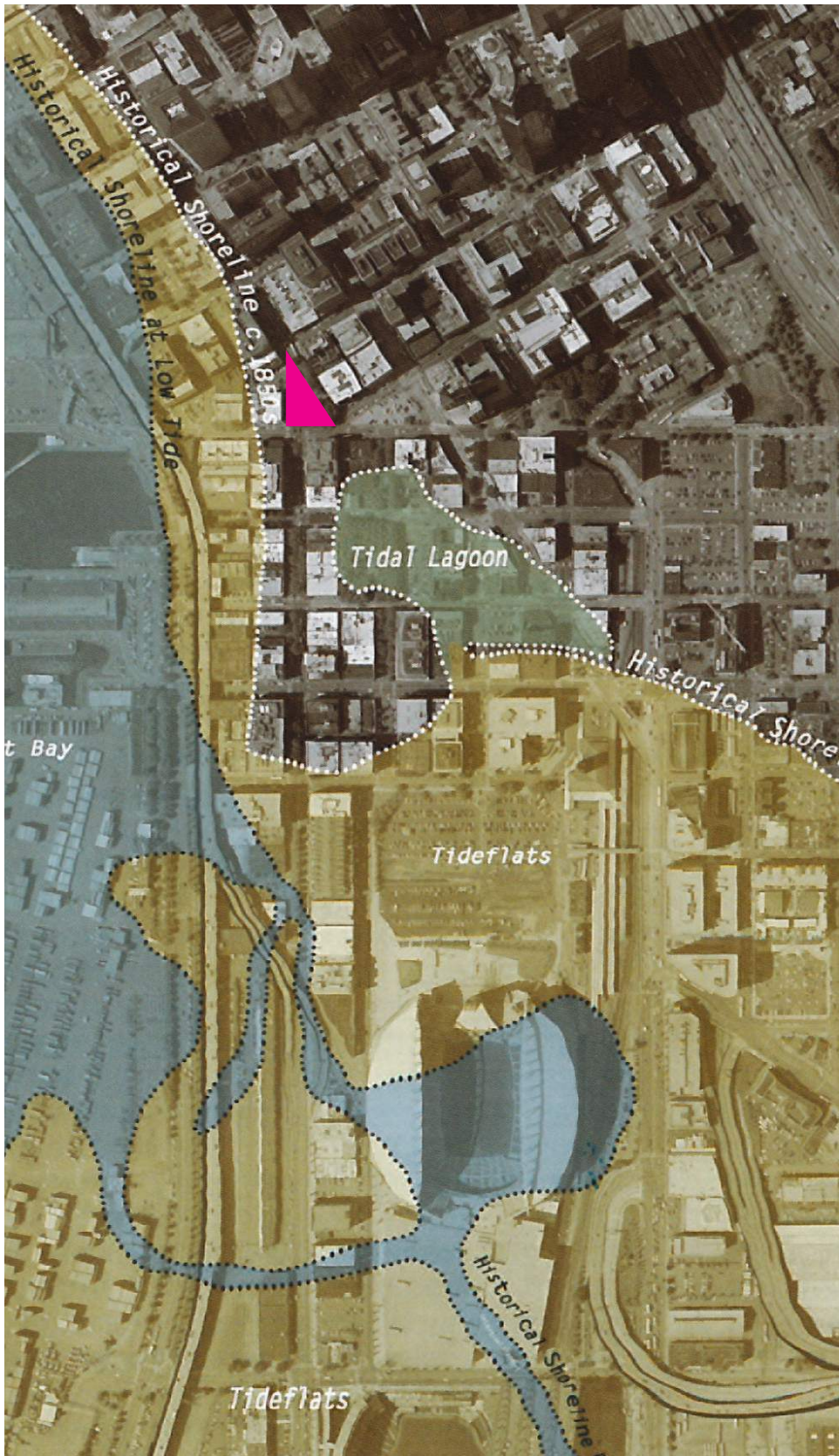
Pioneer Square Park Today



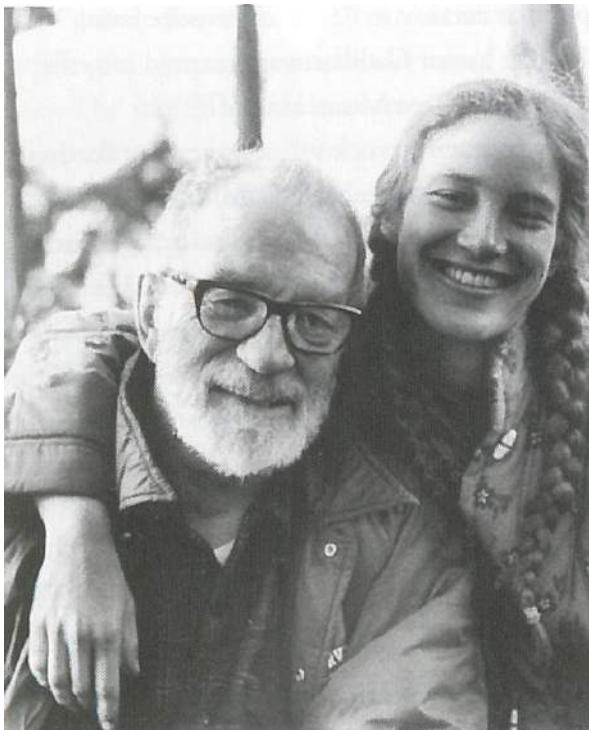
Pioneer Square Park Today



The Waterfront and Pioneer Square Park - Origins of Community



Pioneer Square Park - Origins of Community

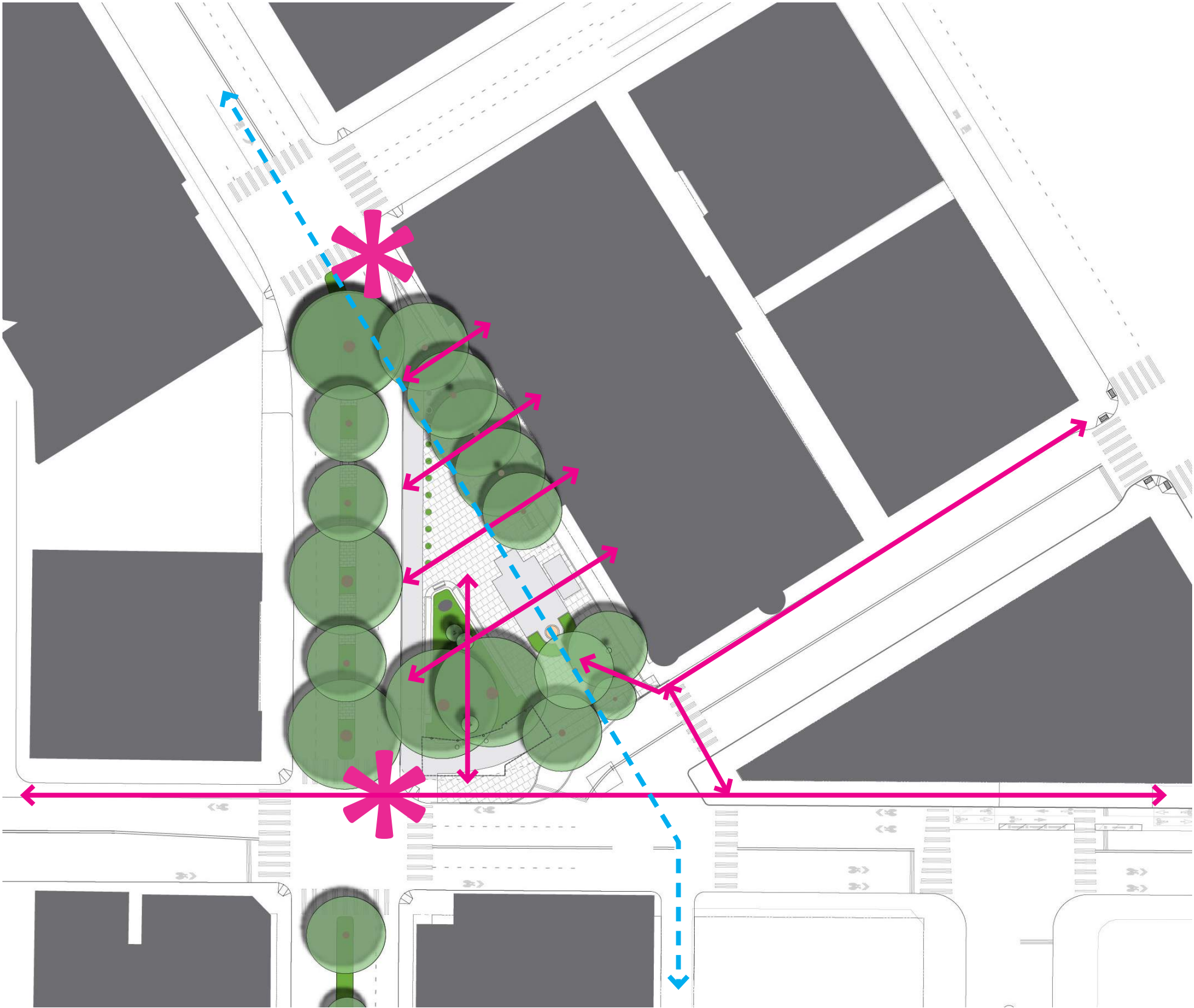


Pioneer Square Park Challenges

- **CIRCULATION** is Separated from Park
- **VIEWS** into park are **obstructed**
- **PIONEER BUILDING** is not visible from south
- Chief Seattle and associated **ARTWORK** is not visible or celebrated
- **DARK** edge at Yesler & James
- **PERGOLA** is not Visible
- **PLANTING** area walls off the park
- Not **ADA** friendly
- **IDENTITY**: a Triangle called a Square

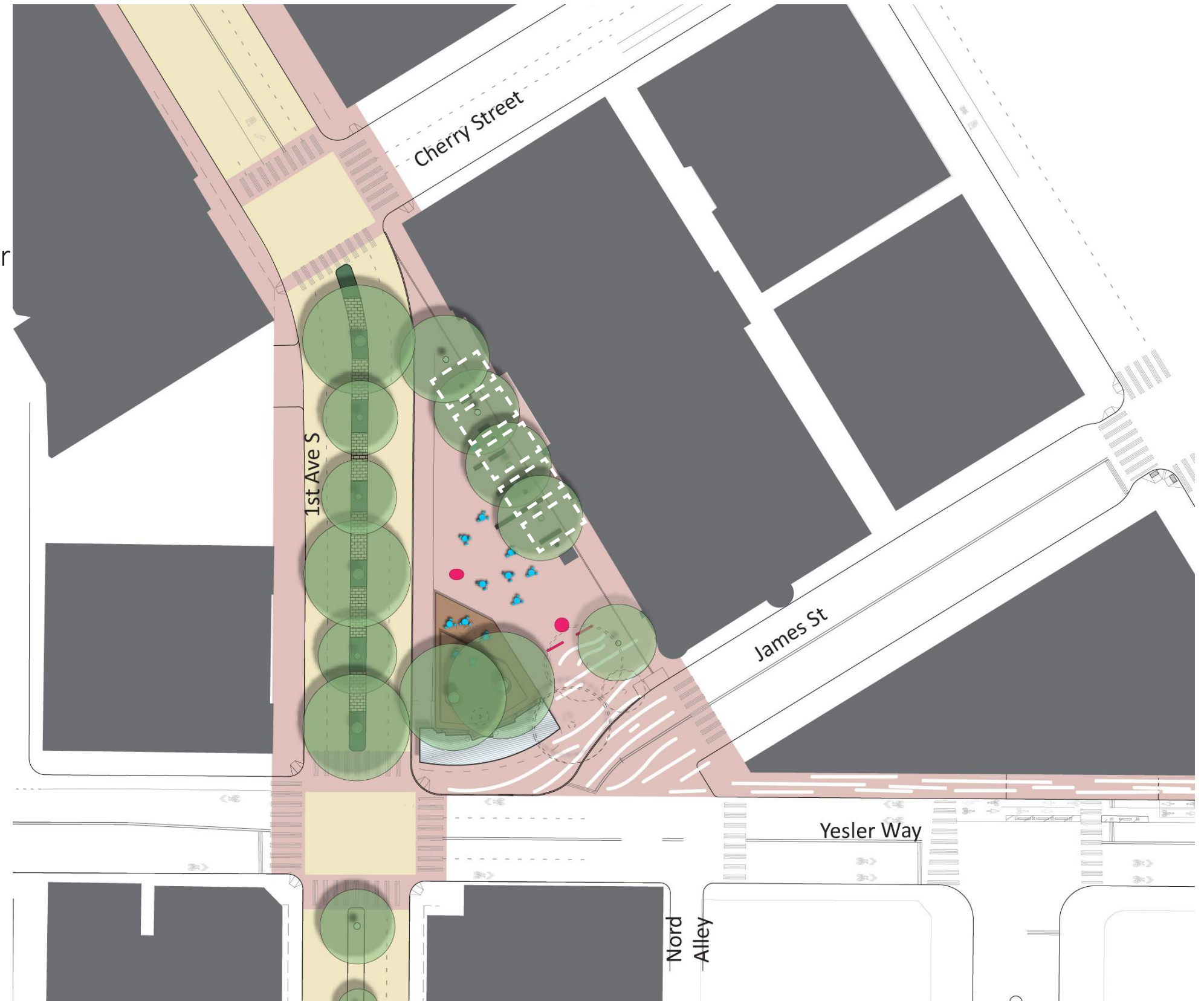


Pioneer Square Park Opportunities

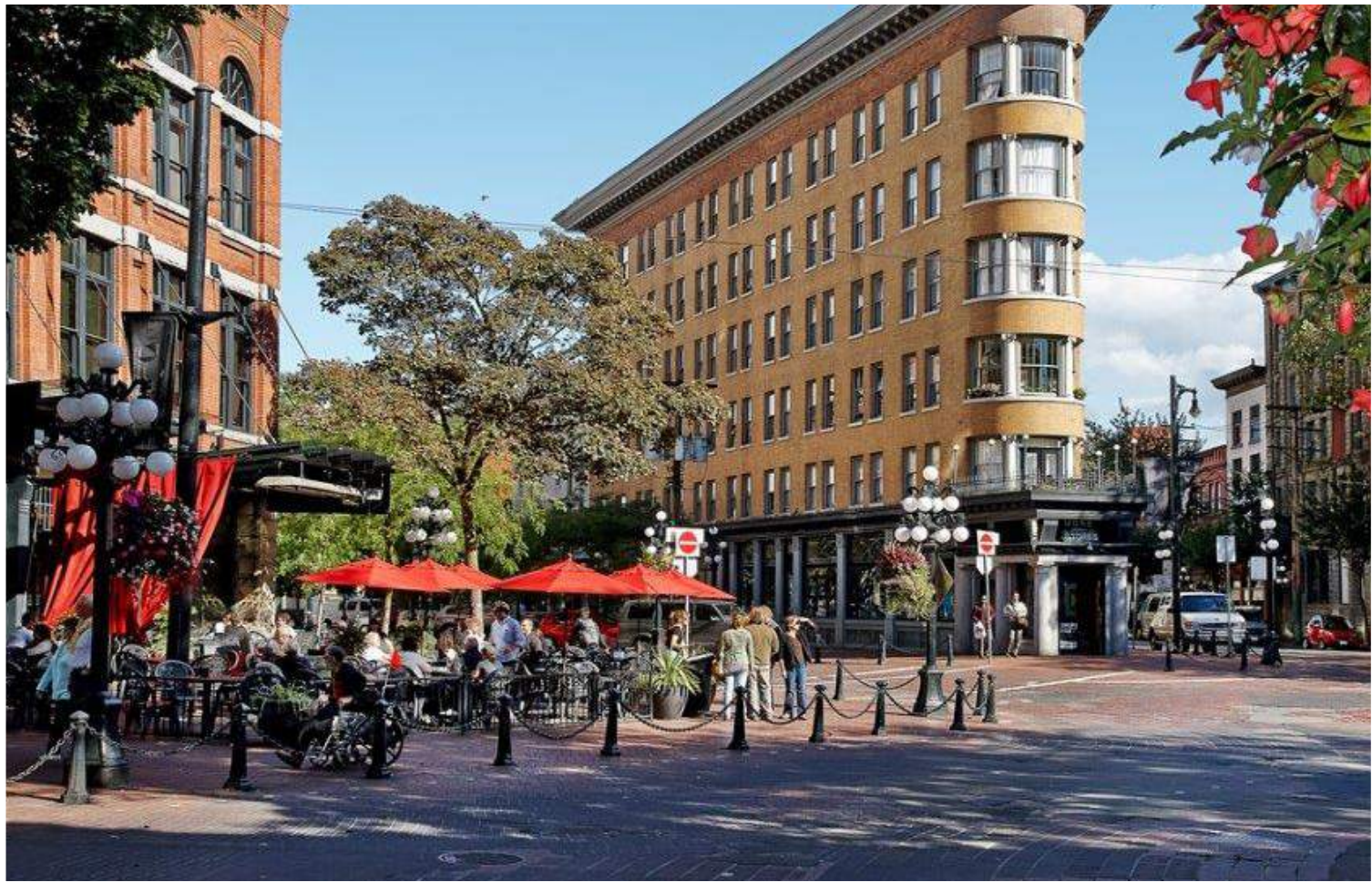


Pioneer Square Park Guidelines

- **LIGHT** the Pergola
 - **PRUNE** Large Trees
 - Selective Tree **REMOVAL**- South Side
 - Encourage **MOVEMENT** into Pioneer Building- rotate benches / create outdoor rooms
 - **IDENTITY**: Use Original name- Pioneer Place
-
- **ACTIVATE** the Corner: Wooden platform protects trees, encourages movement through Pergola and activates the park interior
 - Extend **INTERPRETIVE** Plaza to Yesler
 - Special **PAVING** on surrounding sidewalks & crosswalks



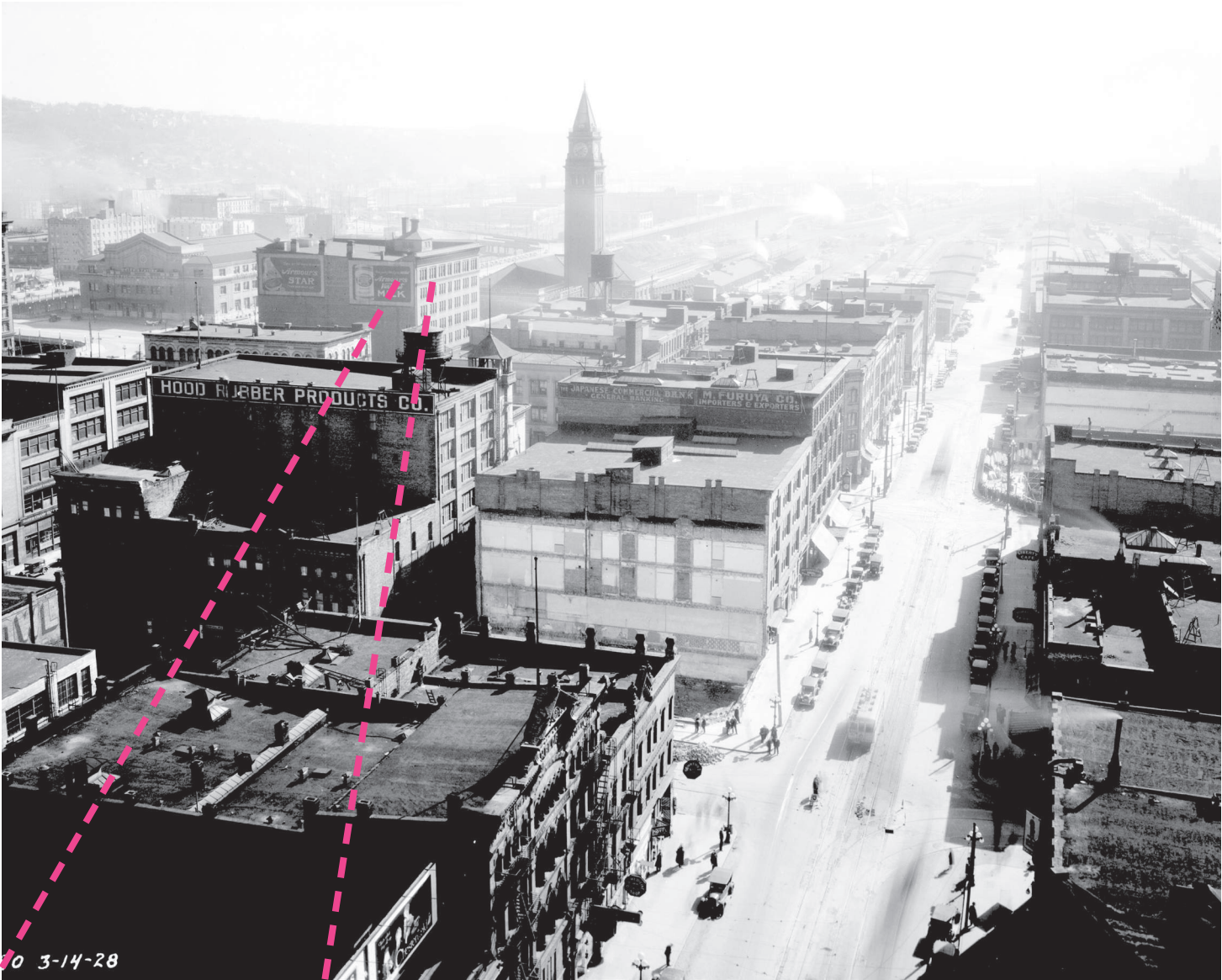
Pioneer Square Park Precedents



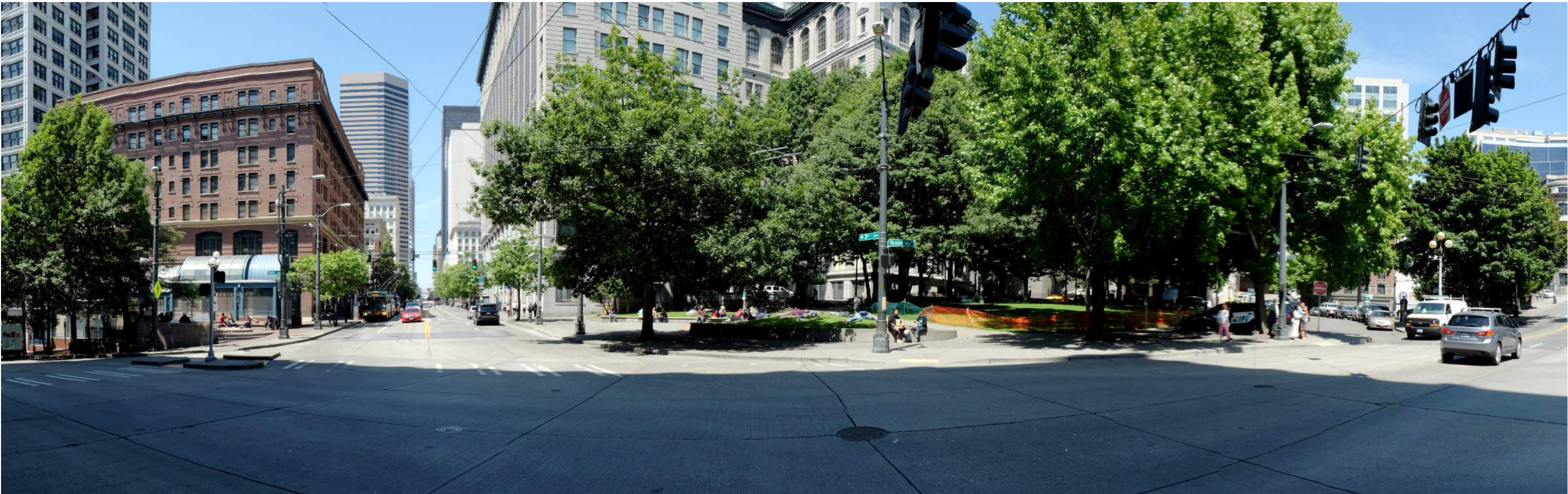
City Hall Park and Yesler Way - The Landscape Transformed



Fortson Square - Immigrant Cultures



City Hall Park, Prefontaine and Fortson Today



City Hall Park, Prefontaine and Fortson Today



City Hall Park Area Challenges

CITY HALL PARK

- Lack of **ACTIVE BUILDING EDGES**
- Loss of **ENTRANCE** to Courthouse
- Courthouse is not **VISIBLE**
- 5 Way **INTERSECTION**, Buses
- Not Enough **ACTIVITY**
- Overly **SHADED**
- Hang Out Spaces / **HABITATION**
- **CIRCULATION** is Indirect/ Obstructed
- Not **ADA** friendly



City Hall Park Area Challenges

PREFONATINE PARK

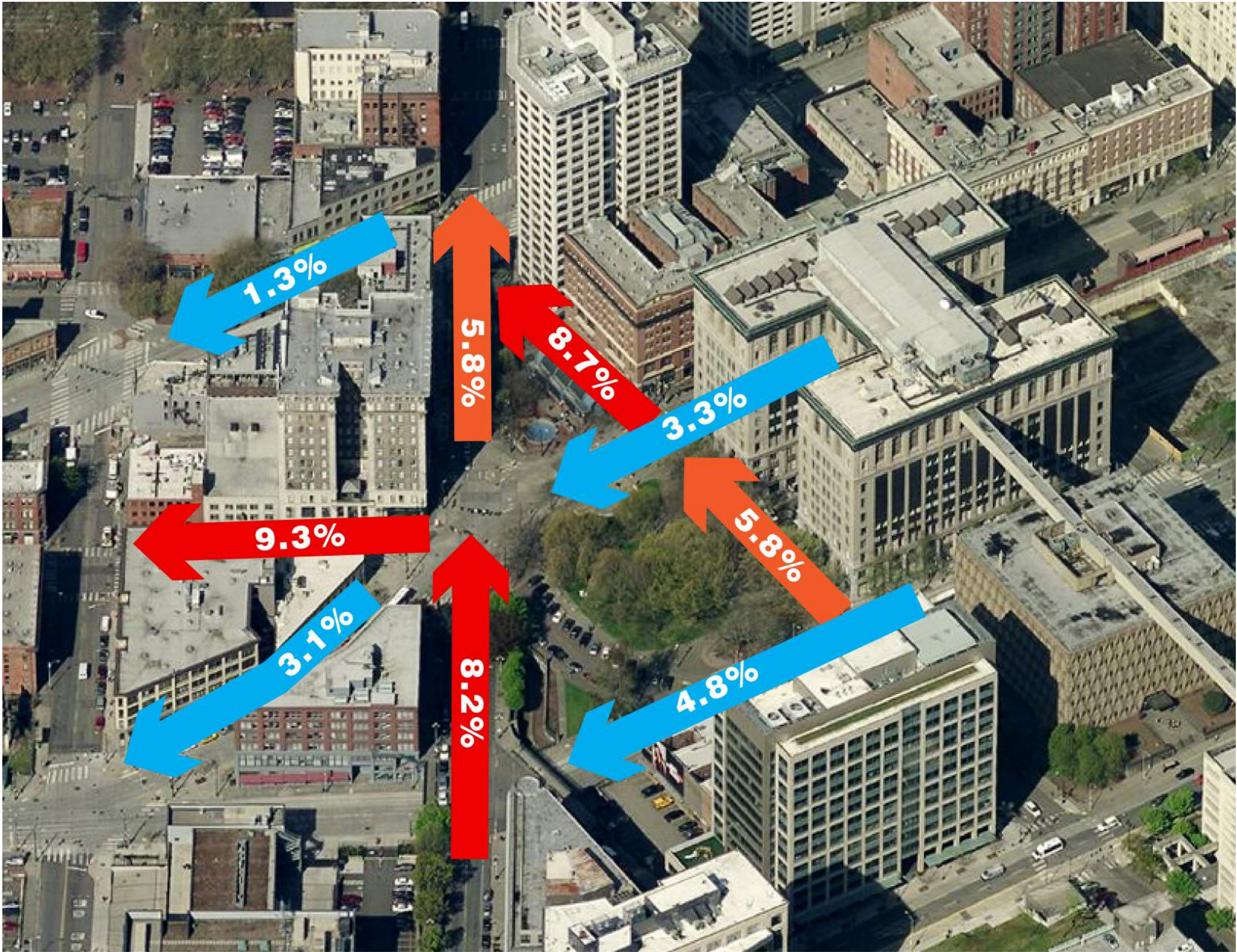
- **VIEWS** are Obstructed
- **CIRCULATION** is Squeezed
- Not **ADA** friendly

FORTSON SQUARE

- **VIEWS** are Obstructed
- **CIRCULATION** is Squeezed
- Overly **SHADED** and **PASSIVE**
- Collects **TRASH**
- **ARTWORK** can not be Appreciated
- Not **ADA** friendly



City Hall Park Area Challenges



City Hall Park Area Opportunities



City Hall Park Area Opportunities

CITY HALL PARK

- Create **ACTIVE**, pedestrian corridor
- Selectively remove **TREES**, plant columnar trees in front of courthouse
- Create **CLEAR, ACCESSIBLE** circulation linked to Street Crossings
- Integrated or **MOVABLE SEATING** only
- **FRONT DOOR** on Courthouse building
- Close or modify **DILLING WAY**
- **CAP & ACTIVATE** Park South of Dilling Way - Interpretive Play? Topography? Housing Development?



City Hall Park Area Opportunities

PREFONATINE PARK

- Reconstruct and **LOWER FOUNTAIN**
- Integrated Plaza / **TUNNEL ENTRANCE** - Redesign with ST3
- Selectively Remove **TREES**
- Enhance Visual and Physical **CONNECTIONS**

FORTSON “PLACE”

- Selectively Remove **TREES**
- Enhance Visual and Physical **CONNECTIONS**



City Hall Park Precedents



City Hall Park Precedents



Prefontaine and Fortson Precedents



King Street Station Area - Crossing the Continent



King Street Station Area Today



King Street Station Area Challenges

- Vehicular circulation dominates- Jackson, 4th and 2nd Ave. Extension are not **PEDESTRIAN FRIENDLY**
- Lack of design continuity and **SENSE OF PLACE**
- Great city **VIEW** but weak foreground / **FRAME**
- **ACTIVITIES** - Not enough to do, these are Destination Spaces being treated like circulation
- **BUILDING FRONTAGE** along Union Station Square is inactive
- **STREET GRID** along Union Station Square is a remnant of the former grid

Union Station
Square

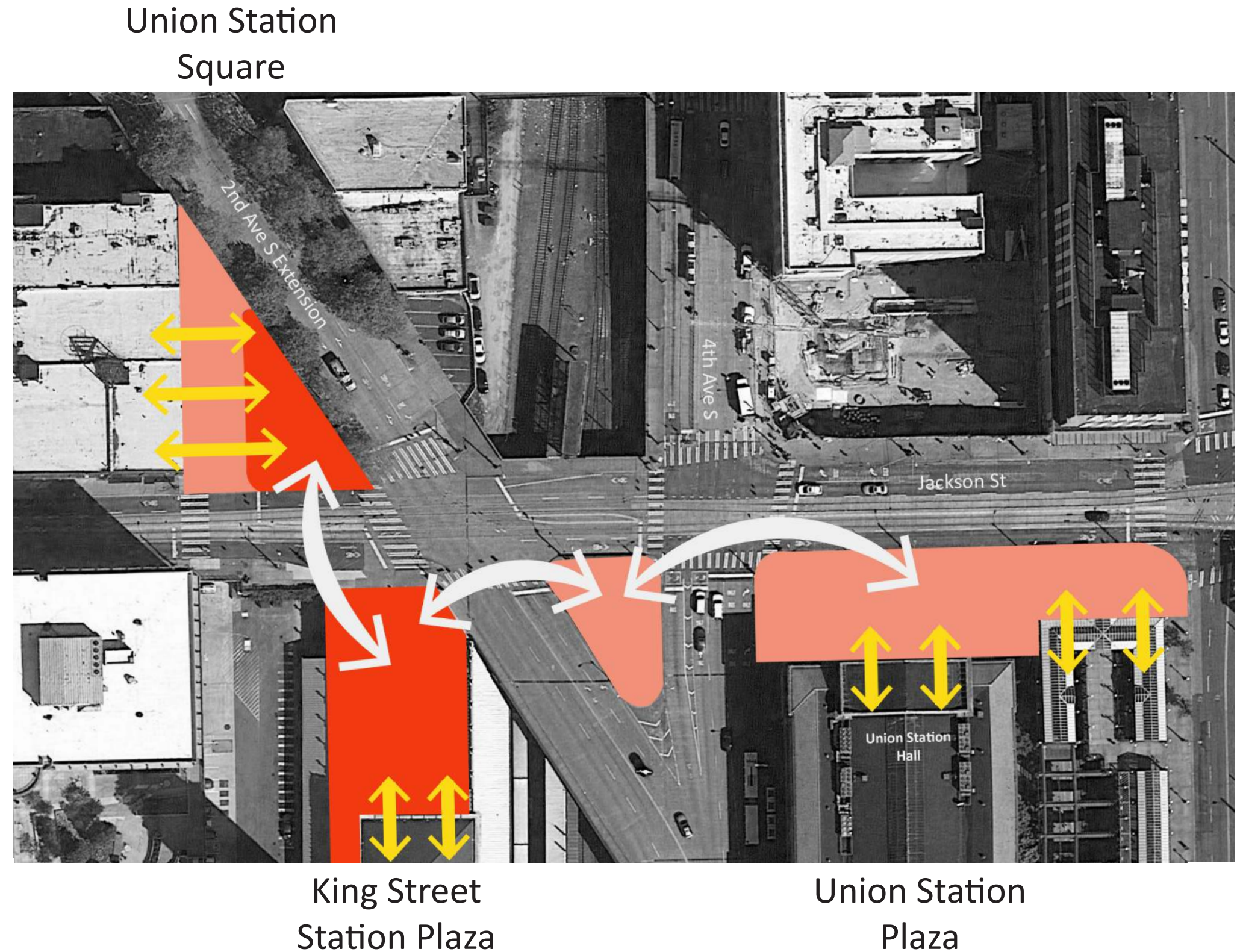


King Street
Station Plaza

Union Station
Plaza

King Street Station Area Guidelines

- Develop **CONTINUITY** through shared design language for each space: Materials, Trees, Furnishings
- Columnar **TREES** and/or Ginkgos (China native) for all spaces - highlight building facades, provide consistent structure to open spaces
- Link plazas with special **PAVING** in crosswalks and sidewalks
- Create **ART & LIGHTING** Gateway at 4th Ave. and 2nd Ave., extend special paving across 2nd Ave. leg to Union Station Square
- Provide additional hard surface for **EVENTS** at King Street Station
- Develop shared **PROGRAMMING** strategies for each space: International District Market or Pike Place Market

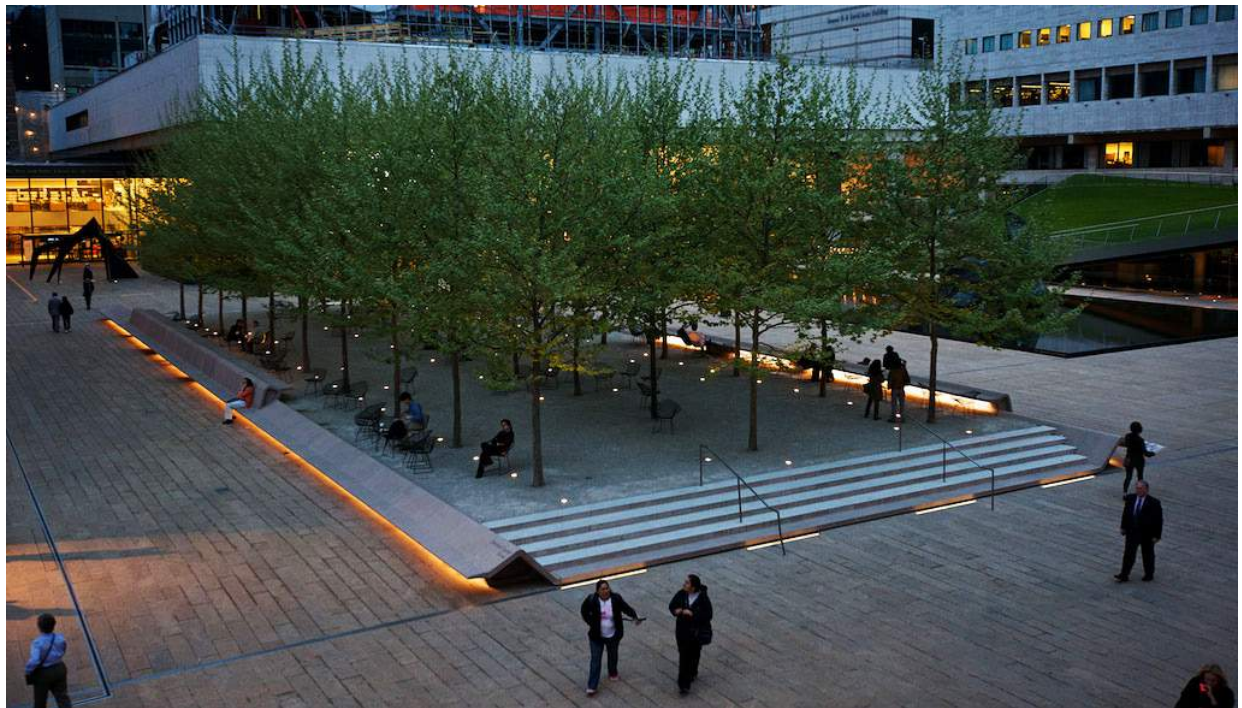


King Street Station Area Guidelines

- Develop shared **PROGRAMMING** strategies for each space:
- Find **TENANTS** for King Street Station
- Develop **SHARED DESIGN LANGUAGE**
- Special **PAVING** in crosswalks and sidewalks; Extend Special Paving Across 2nd Ave. leg to Union Square Park
- **ART & LIGHTING** gateway at 4th Ave. and 2nd Ave.
- Columnar **TREES** and/or Gingkos (China native) for all plazas
- **MOVABLE** tables and chairs at Union Station Square
- Backless **BUS SHELTERS** at Union Station Square
- **IDENTITY:** Rename Union Station Square and name Union Station Plaza



King Street Station Precedents



Primary Gateways

