

# **PIONEER SQUARE COVID-19 INFORMATION AND UPDATES MAY 22, 2020 1:30-2:30p**



# TODAY'S AGENDA

## THE FOLLOWING TOPICS WILL BE COVERED DURING TODAY'S SESSION

- Current public health and phases overview
- Alliance Small Business Support Program
- 2020 Inspiration Fund
- Resumption of business (presented by OED)
- Public safety
- Reopening resources
- Ongoing project updates

### Questions?

Type them into the chat box or state that you have a question and we will address them or call on you to speak intermittently throughout the presentation and at the end.



# CURRENT SITUATION

## PUBLIC HEALTH

[This “Stay Home, Stay Healthy” emergency order has been extended.](#) The order, which bans most gatherings and temporarily shutters most non-essential businesses, will continue through May 31 and entails the following:

- Requires every Washingtonian to stay home unless they need to pursue an essential activity.
- Introduces a phased approach based on healthcare system readiness, testing capacity and availability, case and contact investigations, and ability to protect high-risk populations.



# WASHINGTON'S PHASED APPROACH

## Reopening Business and Modifying Physical Distancing Measures

	 Phase 1	 Phase 2	 Phase 3	 Phase 4
<b>High-Risk Populations*</b>	Continue to Stay Home, Stay Healthy	Continue to Stay Home, Stay Healthy	Continue to Stay Home, Stay Healthy	Resume public interactions, with physical distancing
<b>Recreation</b>	Some outdoor recreation (hunting, fishing, golf, boating, hiking)	All outdoor recreation involving fewer than 5 people outside your household (camping, beaches, etc.)	<ul style="list-style-type: none"> <li>- Outdoor group rec. sports activities (5-50 people)</li> <li>- Recreational facilities at &lt;50% capacity (public pools, etc.)</li> </ul>	Resume all recreational activity
<b>Gatherings (social, spiritual)</b>	<ul style="list-style-type: none"> <li>- None</li> <li>- Drive in spiritual service with one household per vehicle</li> </ul>	Gather with no more than 5 people outside your household per week	Allow gatherings with no more than 50 people	Allow gatherings with >50 people
<b>Travel</b>	Only essential travel	Limited non-essential travel within proximity of your home	Resume non-essential travel	Continue non-essential travel
<b>Business/ Employers</b>	<ul style="list-style-type: none"> <li>- Essential businesses open</li> <li>- Existing construction that meet agreed upon criteria</li> <li>- Landscaping</li> <li>- Automobile sales</li> <li>- Retail (curb-side pick-up orders only)</li> <li>- Car washes</li> <li>- Pet walkers</li> </ul>	<ul style="list-style-type: none"> <li>- Remaining manufacturing</li> <li>- New construction</li> <li>- In-home/domestic services (nannies, housecleaning, etc.)</li> <li>- Retail (in-store purchases allowed with restrictions)</li> <li>- Real estate</li> <li>- Professional services/office-based businesses (telework remains strongly encouraged)</li> <li>- Hair and nail salons/Barbers</li> <li>- Housecleaning</li> <li>- Restaurants &lt;50% capacity table size no larger than 5</li> </ul>	<ul style="list-style-type: none"> <li>- Restaurants &lt;75% capacity/ table size no larger than 10</li> <li>- Bars at &lt;25% capacity</li> <li>- Indoor gyms at &lt;50% capacity</li> <li>- Movie theaters at &lt;50% capacity</li> <li>- Government (telework remains strongly encouraged)</li> <li>- Libraries</li> <li>- Museums</li> <li>- All other business activities not yet listed except for nightclubs and events with greater than 50 people</li> </ul>	<ul style="list-style-type: none"> <li>- Nightclubs</li> <li>- Concert venues</li> <li>- Large sporting events</li> <li>- Resume unrestricted staffing of worksites, but continue to practice physical distancing and good hygiene</li> </ul>

\* High-risk populations are currently defined by CDC as: persons 65 years of age and older; people of all ages with underlying medical conditions (particularly not well controlled) including people with chronic lung disease or moderate to severe asthma, people who have serious heart conditions, people who are immunocompromised, people with severe obesity, people with diabetes, people with chronic kidney disease undergoing dialysis, and people with liver disease; people who live in a nursing home or long-term care facility.



# SMALL BUSINESS SUPPORT PROGRAM

- \$120K seed funding (HSD, Sounders' RAVE Foundation)
- Focus on assisting businesses in creating, sustaining, or enhancing an active online presence
- 100% of the initial funding will go directly to businesses in the district
- Applicants seeking funding may request a maximum of \$7,500
- Applications accepted May 25-June 12. Awardees announced June 29.



# 2020 INSPIRATION FUND

- Application period open until May 31 at 11:59pm.
- The BIA will accept applications for projects ranging from \$1,000-\$20,000. 80% will be funded when the fund is awarded. Remaining 20% funded upon completion.
- Awards notified by July 15.
- To be eligible for funding, applicants must submit a completed Application Form with required documentation (if applicable) by email to [info@pioneersquare.org](mailto:info@pioneersquare.org)



# City of Seattle Office of Economic Development

## Snap Shot of Info

- **Resources**

- Small Business Legal Services
- SBA Disaster Loan Technical Assistance
- #SupportPugetSoundSmallBiz campaign map
- COVID-19 Resource page for business, workers and nonprofits

- **Curbside pick up zones** with the City of Seattle  
206-684-ROAD or email [684-Road@seattle.gov](mailto:684-Road@seattle.gov)

- **Permitting and licensing**

- Examples: City of Seattle extending the B&O tax filing and payment deadline for first and second quarters until October 31<sup>st</sup>, Health permit renewals extended until July 15<sup>th</sup>
- Permits and licenses are still required to operate



# PHASE 2: RETAIL

- On [May 8](#) and [May 12](#), WA State announced guidelines on curbside and in-person retail operations, including public health protocols to protect business staff and customers.
- Curbside retail is permitted under Phase One of the Safe Start plan. In-person retail will be permitted under Phase Two.
- No in store retail establishment may operate until they can meet and maintain all the requirements in the guidelines, including providing materials, schedules and equipment required to comply.





# PHASE 2: RESTAURANTS

- On [May 11](#), WA State announced guidelines on dine-in services at restaurants and taverns.
- Restaurant/tavern must ensure strict adherence to all measures established by the Governor's guidance, the Department of Labor & Industries (L&I), and the Washington State Department of Health Workplace and Employer Resources & Recommendations (DOH). All businesses are strongly encouraged to require their customers to use cloth face coverings when interacting with their staff.
- All businesses are strongly encouraged to require their customers to use cloth face coverings when interacting with their staff.



# PHASE 2: SERVICES

- On [May 13](#), WA State announced guidelines for personal service establishments.
- Personal service providers covered in these operational guidelines including Cosmetologists, Hairstylists, Barbers, Estheticians, Master Estheticians, Manicurists, Nail Salon Workers, Electrologists, Permanent Makeup Artists, Tattoo Artists, Cosmetology Schools and Esthetics Schools.
- Employer-owners must specifically ensure operations follow the main L&I COVID-19 requirements to protect employee-service providers and clients



# PUBLIC SAFETY

- On May 22, the Alliance, in collaboration with representatives across Seattle sent a letter to City Council demonstrating support for the continued work of the Navigation Team.
- Homeland Patrol continues to patrol neighborhood.

## How/Who to Report:

- Always call 9-1-1 for emergency and non-emergency reporting.
- On-going drug activity: 206-684-5797
- “[Find It, Fix It](#)” app
- The (MID) funded Clean Team is currently providing services Monday-Friday from 9 am-1:30 pm
- Community Police Team: call 206-684-8996
- Crime Prevention Coordinator:



# ALLIANCE RESOURCES UPDATE

- Regular information dissemination
  - [Weekly COVID-19 resources, bi-weekly public safety message](#)
  - [Pioneer Square Business Owner/Manager FB](#)
- [Support Local – Pioneer Square Marketplace](#)
- #SupportPSQ campaign
- [Mural project](#)





# MURAL PROJECT UPDATE

- Thank you to the artists, businesses, property managers that participated! .
- Funding for APS murals made possible by
  - Pioneer Square BIA
  - Pioneer Square Residents' Council
  - Donations
- Neighborhood-wide numbers:
  - 42 murals
- Professional Photographer
- Business Owner Photo Opportunity!



More great public art in our communities. Thank you to all of the artists who are painting these murals of hope, inspiration, and whimsy. [#WeGotThisSeattle](#)



# THE MEYER

118

122







118



# STAY HAPPY

@VK.SIGNS  
X  
@LEO.SHALLAT



#SUPPORTPSQ



Jujubeet  
Café

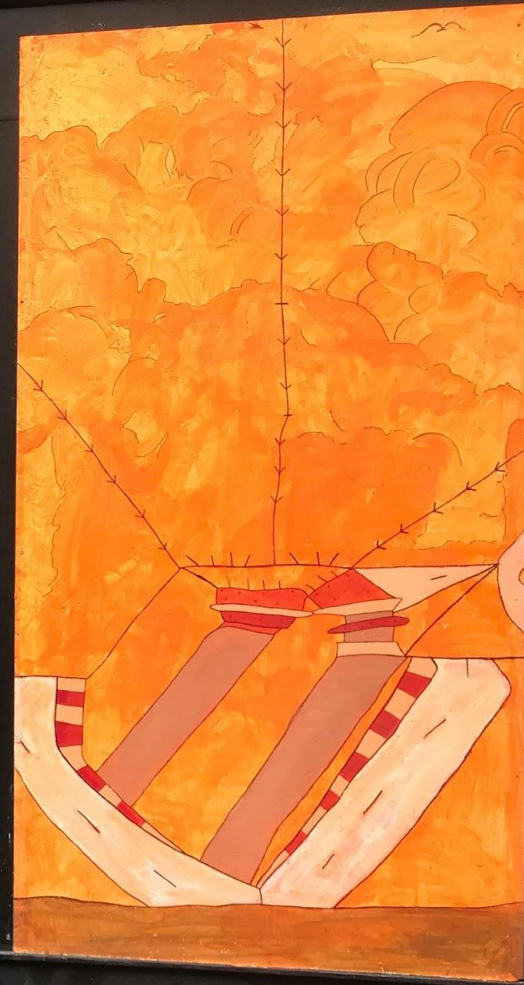
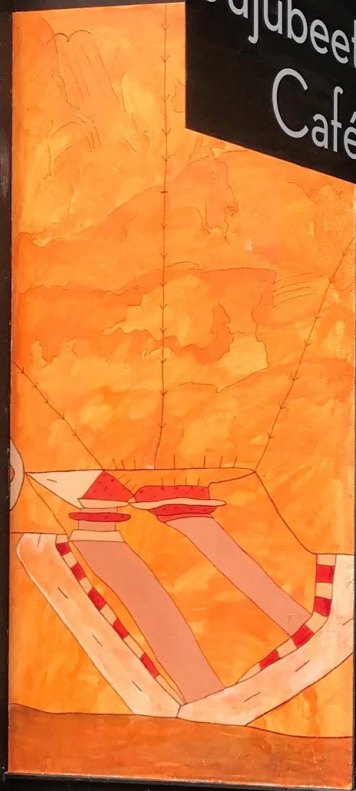
THE ROAD TO GLORY STARTS WITH LOVE

f @MR.EIDO  
@MENTALTRONDE DE JAMBE

07



#SUPPORTPSQ





TH MERCANTILE







RUDY'S

#SUPPORTPSQ  
♡OVERALLCREATIVE

ALLIANCE  
FOR  
PIONEER  
SQUARE

PIONEER  
SQUARE  
B.I.A.

Jujubeet  
Café





220

CREATIVITY

REGENERATES

MARU SHIBUYA



FireWorks

211







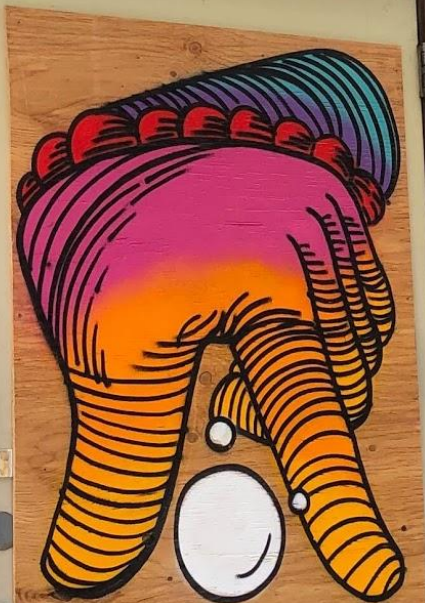








WARNING  
24 HOUR  
VIDEO  
SURVEILLANCE  
NO LOITERING



#  
FLATTEN  
THE  
CURVE

@Illustrativewest x @VK.signs







1000 1st Ave S.







SEATTLE  
TEAM SHOP  
[WWW.SEATTLETEAMS.COM](http://WWW.SEATTLETEAMS.COM)

MARINERS

SEAHAWKS

1029





TREAT  
OTHERS  
HOW  
YOU  
WANT  
TO BE  
TREATED

©LILLY-B.O.-M.-B



BE  
BRAVE

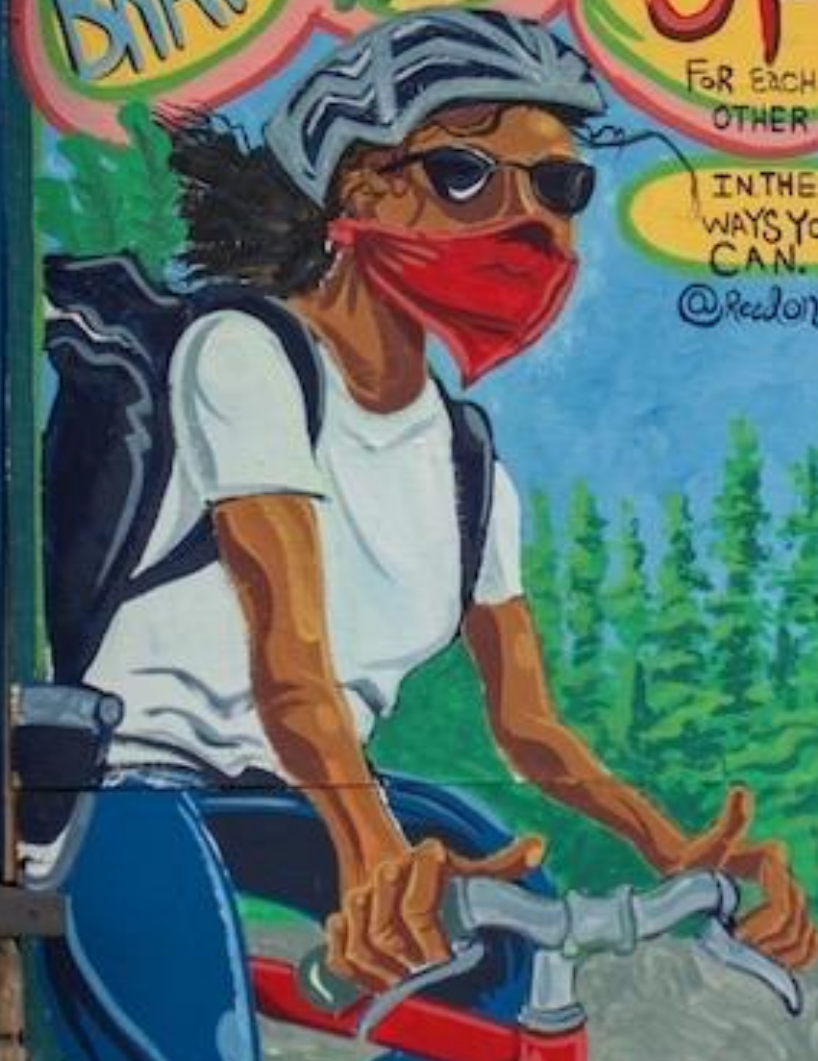
BE  
KIND

SHOW  
UP

FOR EACH  
OTHER

IN THE  
WAYS YOU  
CAN.

@ReedOnWheels



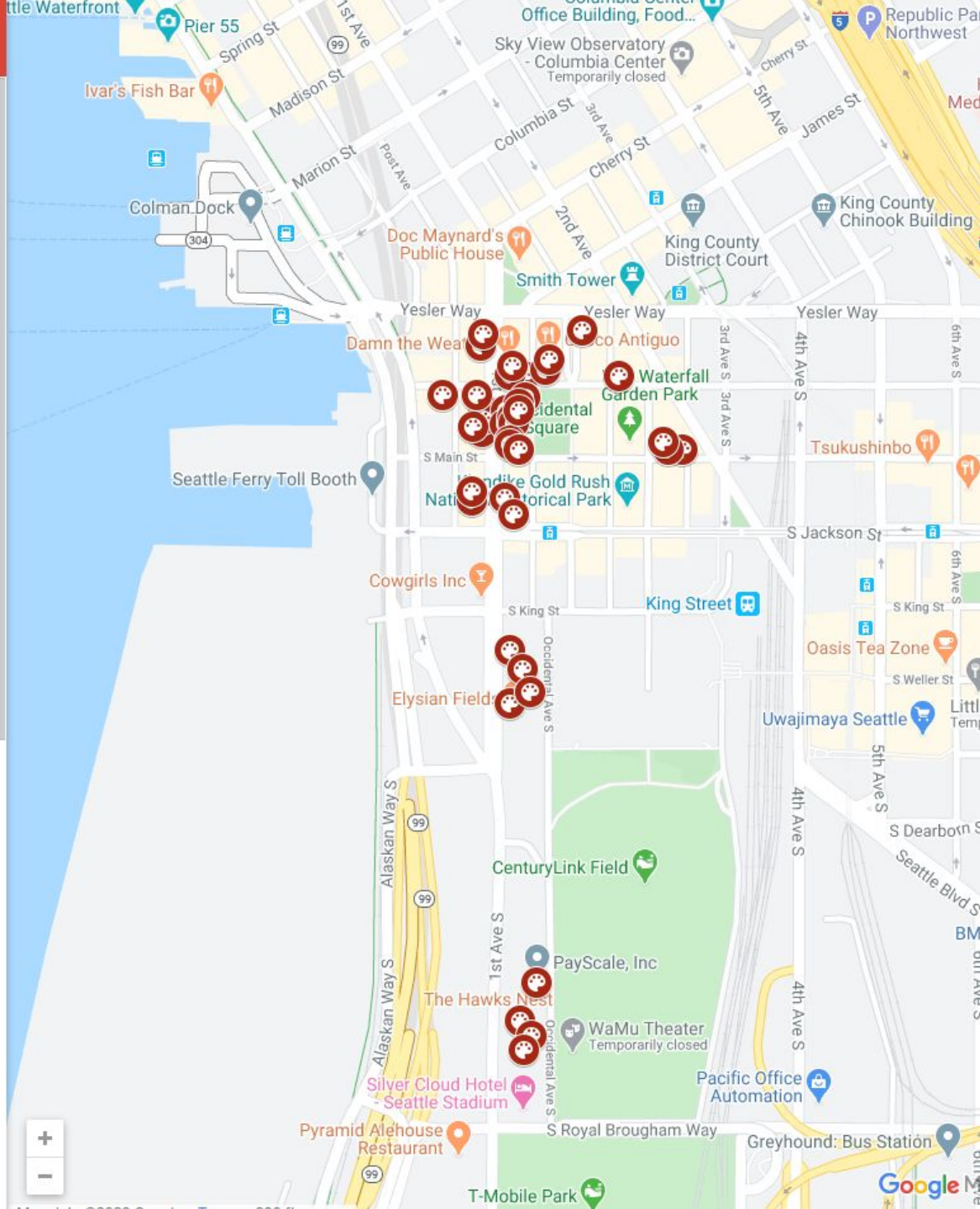
160 views

SHARE EDIT



## Murals

- 📍 Bon Voyage Vintage Mural
- 📍 Swannies Sports Bar Mural
- 📍 Agate Designs Mural
- 📍 Pioneer Smoke Shop and Counter Cultur...
- 📍 Fuel Sports Mural
- 📍 118 1st Ave S Mural
- 📍 Emerald City Guitars Mural
- 📍 Gallery Erato Mural
- 📍 The Meyer Mural
- 📍 Central Saloon Mural
- 📍 Division Road, Inc. Mural
- 📍 Casco Antiguo Mural
- 📍 Rudy's Barbershop Pioneer Square Mural
- 📍 i5 Pho Seattle Mural
- 📍 Altstadt Bierhalle & Brathaus Mural
- 📍 ArtXchange Gallery Mural
- 📍 Shotgun Ceremonies Mural
- 📍 211 1st Ave S Mural
- 📍 PayScale, Inc. Mural
- 📍 Arundel Books Mural
- 📍 109 S Washington St - Buttnick Bldg Mural
- 📍 204 1st Ave S - Buttnick Bldg Mural
- 📍 208 1st Ave S - Grand Central Building M...
- 📍 210 1st Ave S - Grand Central Building M...









# NEXT STEPS AND FOLLOW UP

- Today's slides and recording shared after this meeting, along with feedback form
- [Next Pioneer Square COVID-19 Updates and Information Session to be held on Friday, June 19, 2020 1:30-2:30 PM](#)
- Visit [allianceforpioneersquare.org](http://allianceforpioneersquare.org) for full COVID-19 resources
- Email [info@pioneersquare.org](mailto:info@pioneersquare.org) to sign up for weekly COVID-19 updates





# QUESTIONS?



# NEXT STEPS AND FOLLOW UP

- Today's slides and recording shared after this meeting, along with feedback form
- [Next Pioneer Square COVID-19 Updates and Information Session to be held on Friday, June 19th, 2020 1:30-2:30 PM](#)
- Visit [allianceforpioneersquare.org](http://allianceforpioneersquare.org) for full COVID-19 resources
- Email [info@pioneersquare.org](mailto:info@pioneersquare.org) to sign up for weekly COVID-19 updates

